

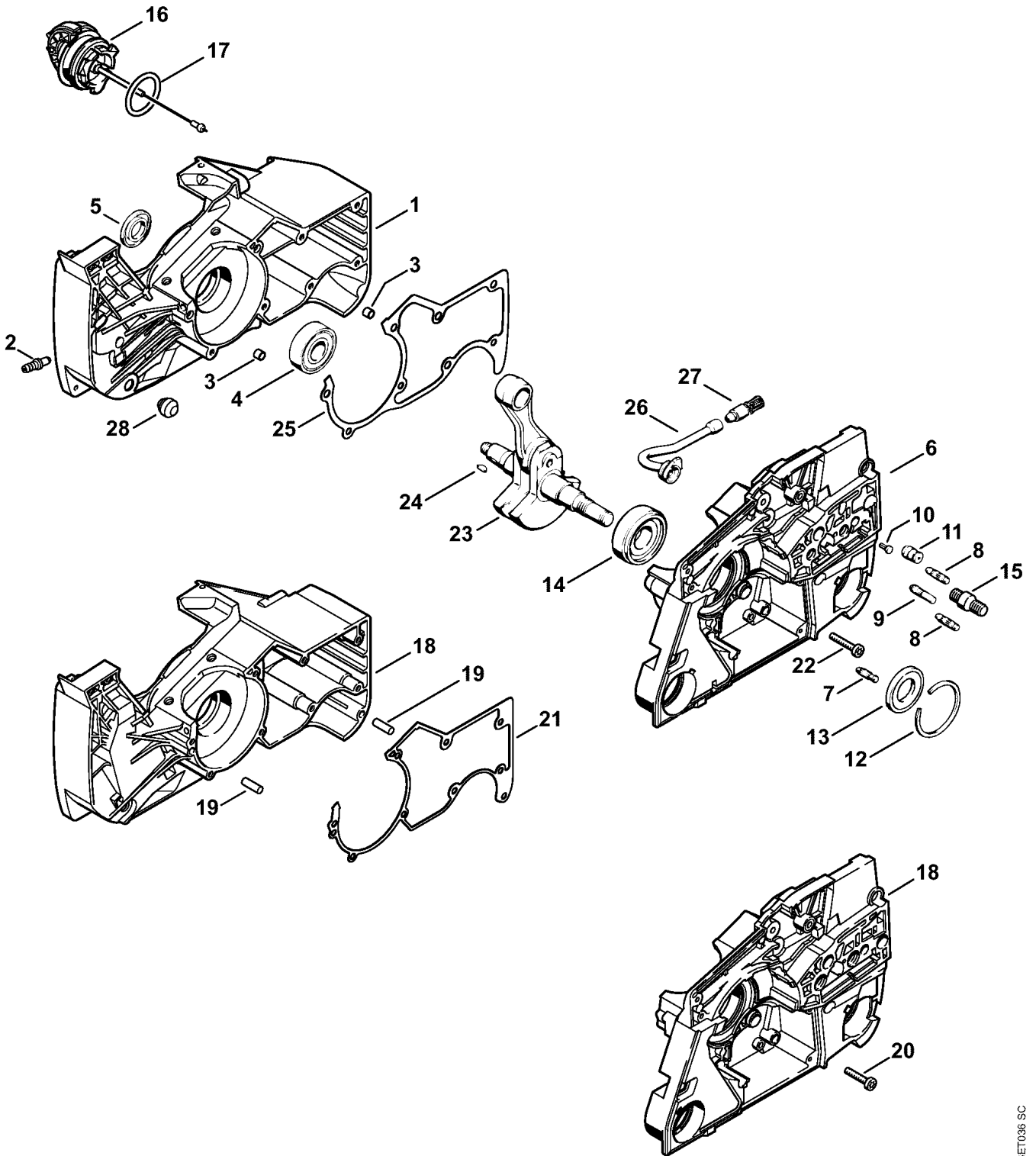
216ET036 SC

## Drawing

## A Crankcase

Reference	Item number	Qty	Description
1	1124 020 2601	1	Crankcase □ 2 - 5
2	0000 988 5215	1	Connector
3	0000 988 8600	2	Sleeve
4	9503 003 6676	1	Grooved ball bearing 6203
5	9640 003 1855	1	Oil seal 17x32.9x5
6	1124 020 2903	1	Crankcase □ 7 - 15
7	1120 162 5200	1	Pin
8	1121 162 5205	1	Pin
9	1121 162 5200	2	Pin
10	0000 974 1200	1	Notched pin 2.6x8
11	1124 640 9100	1	Valve
12	9465 620 2720	1	Snap ring 47
13	9640 003 2250	1	Oil seal B20x39x4
14	9523 003 4386	1	Grooved ball bearing 20x47x15
15	1124 664 2406	2	Collar screw
16	0000 350 0525	1	Filler cap □ 17
17	9645 948 7734	1	O-ring 25x3.5
18	* 1124 020 2116	1	Crankcase (09.2009) □ 2, 4, 7 - 12, 14 - 20
19	* 9371 470 2610	2	Cylindrical pin 5x18 (09.2009)
20	* 9022 341 1050	8	Spline screw IS-M5x25 (09.2009)
21	* 1124 029 0510	1	Gasket (09.2009)
22	9022 341 0900	8	Spline screw IS-M5x28
23	1124 030 0404	1	Crankshaft (25.2005) □ 24
24	1120 036 8500	1	Woodruff key 2x3.7
25	1124 029 0501	1	Gasket
26	1124 647 9400	1	Hose
27	1117 640 3800	1	Pickup body
28	1125 791 2810	1	Stop buffer
	1124 007 1052	1	Set of gaskets □ 5, 13, 25

(1) MS 880, (2) MS 880-Z, (3) MS 880-R, (4) MS 880-RZ

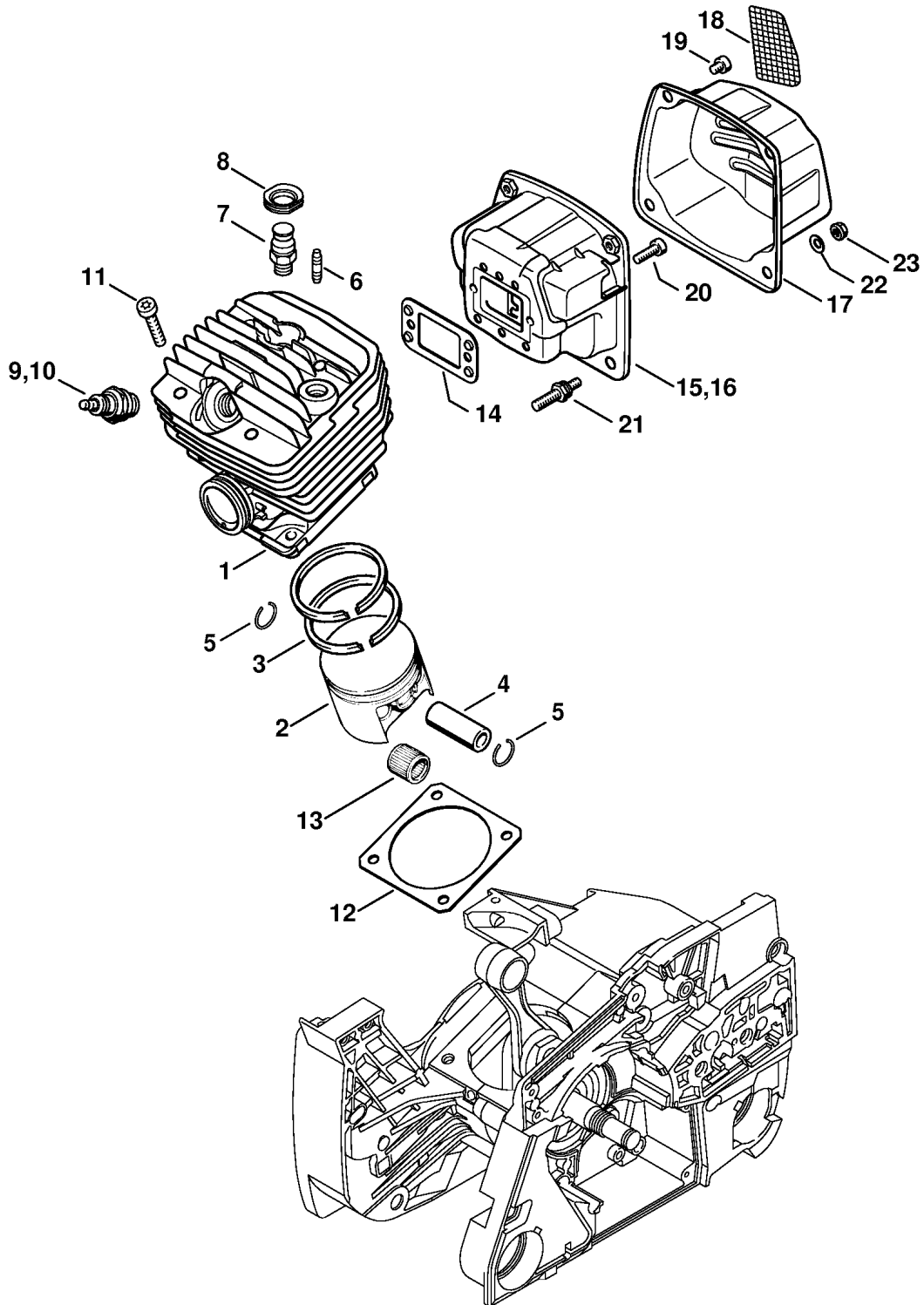


216ET036 SC

---

Reference	Item number	Qty	Description
*	1124 007 1051	1	Set of gaskets 088 (09.2009) □ 5, 13, 21

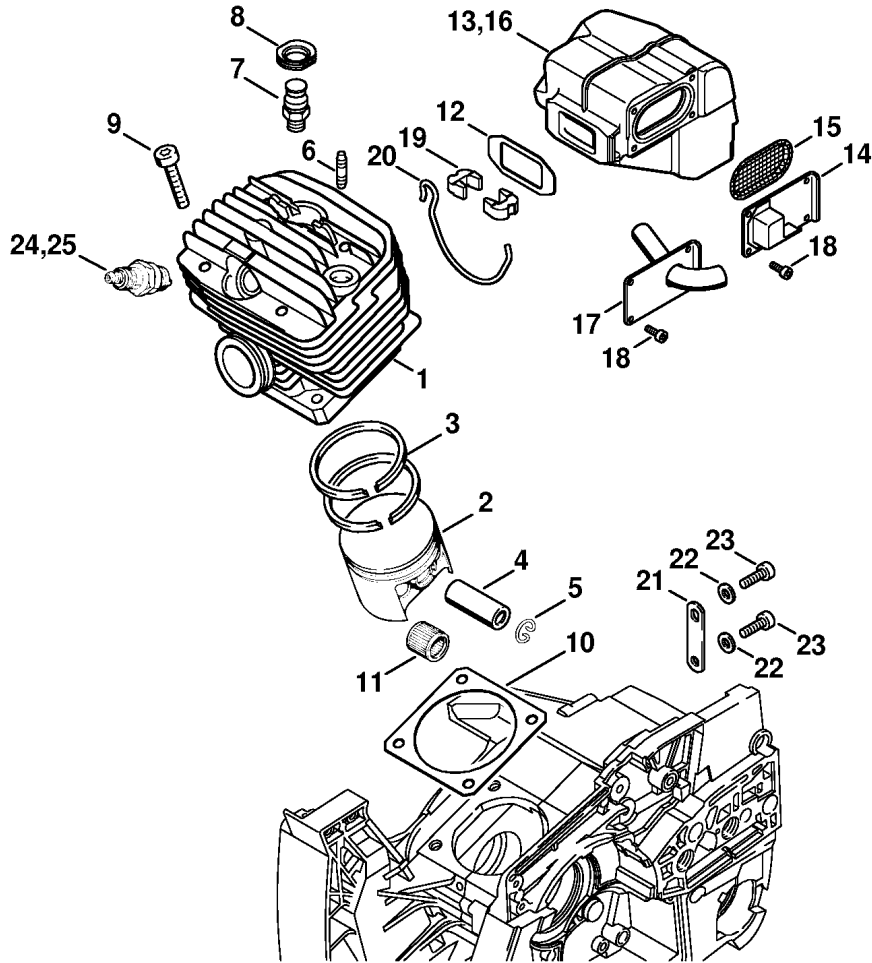
(1) MS 880, (2) MS 880-Z, (3) MS 880-R, (4) MS 880-RZ



216ET035 SC

Reference	Item number	Qty	Description
1	1124 020 1209	1	Cylinder with piston Ø 60 mm □ 2 - 6
2	1124 030 2002	1	Piston Ø 60 mm □ 3 - 5
3	1124 034 3010	2	Piston ring Ø 60x1.2 mm
4	1124 034 1500	1	Piston pin 13x8x39
5	9463 650 1300	2	Snap ring 13x1
6	0000 953 0818	1	Stud M5
7	1124 020 9401	1	Decompression valve
8	1122 084 1405	1	Cover
9	1110 400 7005	1	Spark plug Bosch WSR 6 F
10	0000 400 7000	1	Spark plug NGK BPMR7A
11	9022 341 1370	4	Spline screw IS-M6x30
12	1124 029 2310	1	Cylinder gasket
13	9512 003 3440	1	Needle cage 13 x17x17.5
14	1124 149 0601	1	Muffler gasket
15	1124 140 0603	1	Muffler □ 17
16	1124 140 0604	1	Muffler (2,4) USA, CDN, AUS, NZ □ 17, 18
17	1124 145 0801	1	Exhaust casing
18	1124 141 9005	1	Screen (2,4) USA, CDN, AUS, NZ
19	9022 341 0910	2	Spline screw IS-M5x6
20	9022 341 0982	2	Spline screw IS-M5x16
21	1138 148 0700	2	Collar screw
22	9331 630 0120	2	Conical spring washer 5
23	9220 260 0700	2	Hexagon nut M5
	1124 007 1052	1	Set of gaskets □ 12, 14

(1) MS 880, (2) MS 880-Z, (3) MS 880-R, (4) MS 880-RZ

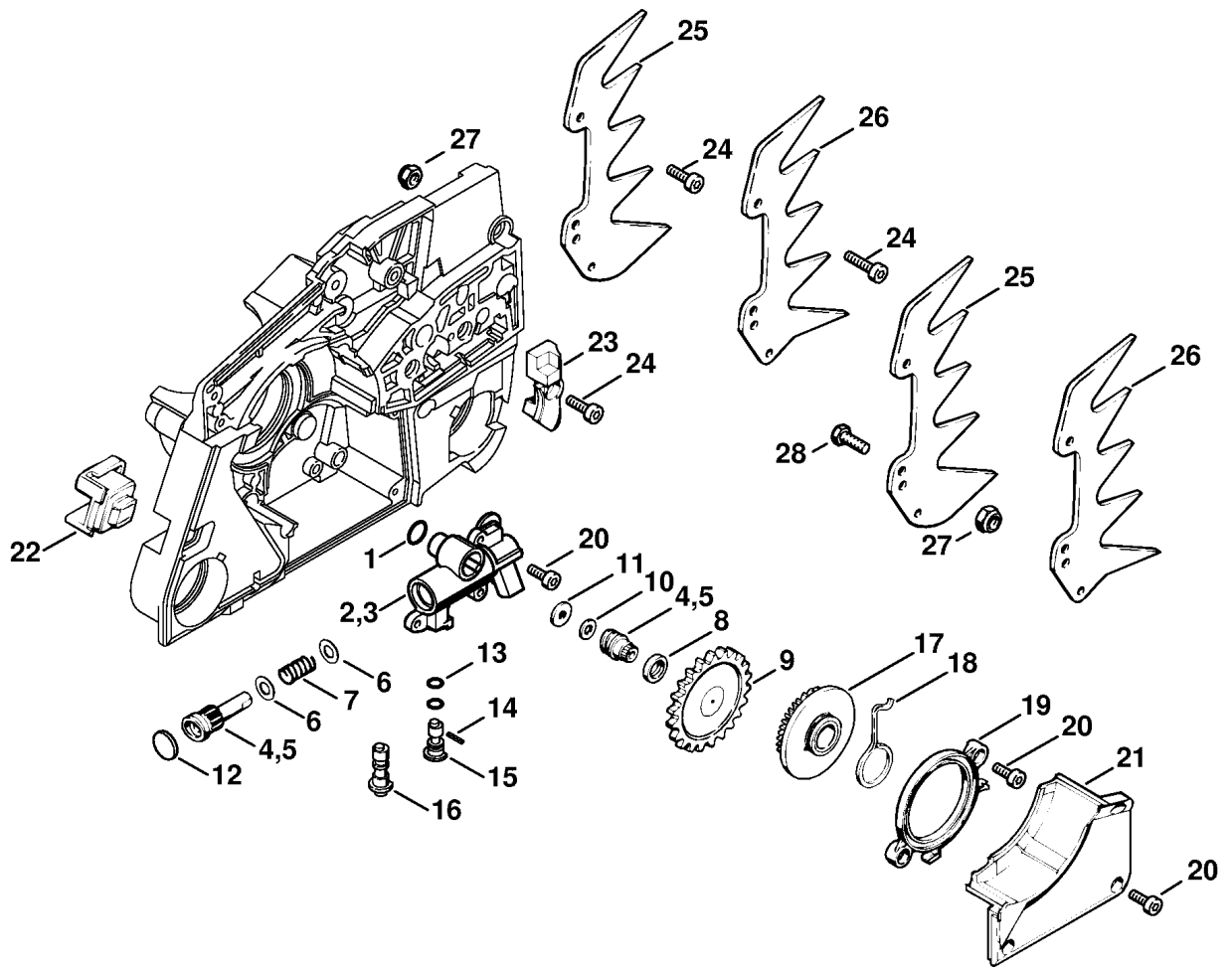


171ET022 GM

Reference	Item number	Qty	Description
1	* 1124 020 1207	1	Cylinder with piston Ø 60 mm (09.2009) □ 2 - 6
2	* 1124 030 2007	1	Piston Ø 60 mm (09.2009) □ 3 - 5
3	* 1124 034 3010	2	Piston ring Ø 60x1.2 mm (09.2009)
4	* 1124 034 1500	1	Piston pin 13x8x39 (09.2009)
5	* 9463 650 1300	2	Snap ring 13x1 (09.2009)
6	* 0000 953 0818	1	Stud M5 (09.2009)
7	* 1124 020 9410	1	Decompression valve (09.2009)
8	* 1122 084 1405	1	Cover (09.2009)
9	* 9022 341 1370	4	Spline screw IS-M6x30 (09.2009)
10	* 1124 029 2310	1	Cylinder gasket (09.2009)
11	* 9512 003 3440	1	Needle cage 13 x17x17.5 (09.2009)
12	* 1124 149 0610	1	Muffler gasket (09.2009)
13	* 1124 140 0625	1	Muffler (2,4) USA, CDN, AUS, NZ (09.2009) □ 14, 15, 18, 21 - 23
14	* 1124 145 2905	1	Muffler cover (2,4) USA, CDN, AUS, NZ (09.2009)
15	* 1124 141 9005	1	Screen (2,4) USA, CDN, AUS, NZ (09.2009)
16	* 1124 140 0620	1	Muffler (09.2009) □ 17, 18, 21 - 23
17	* 1124 145 2900	1	Muffler cover (09.2009)
18	* 9022 313 0660	4	Spline screw IS-M4x12 (09.2009)
19	* 1124 145 1905	2	Tension wedge (09.2009)
20	* 1124 145 1800	1	Tension spring (09.2009)
21	* 1124 145 2005	2	Support (09.2009)
22	* 9291 021 0120	4	Washer 5.3 (09.2009)
23	* 9022 341 0980	4	Spline screw IS-M5x16 (09.2009)
24	* 1110 400 7005	1	Spark plug Bosch WSR 6 F (09.2009)
25	* 0000 400 7000	1	Spark plug NGK BPMR7A (09.2009)
	* 1124 007 1051	1	Set of gaskets 088 (09.2009) □ 10, 12

(1) MS 880, (2) MS 880-Z, (3) MS 880-R, (4) MS 880-RZ

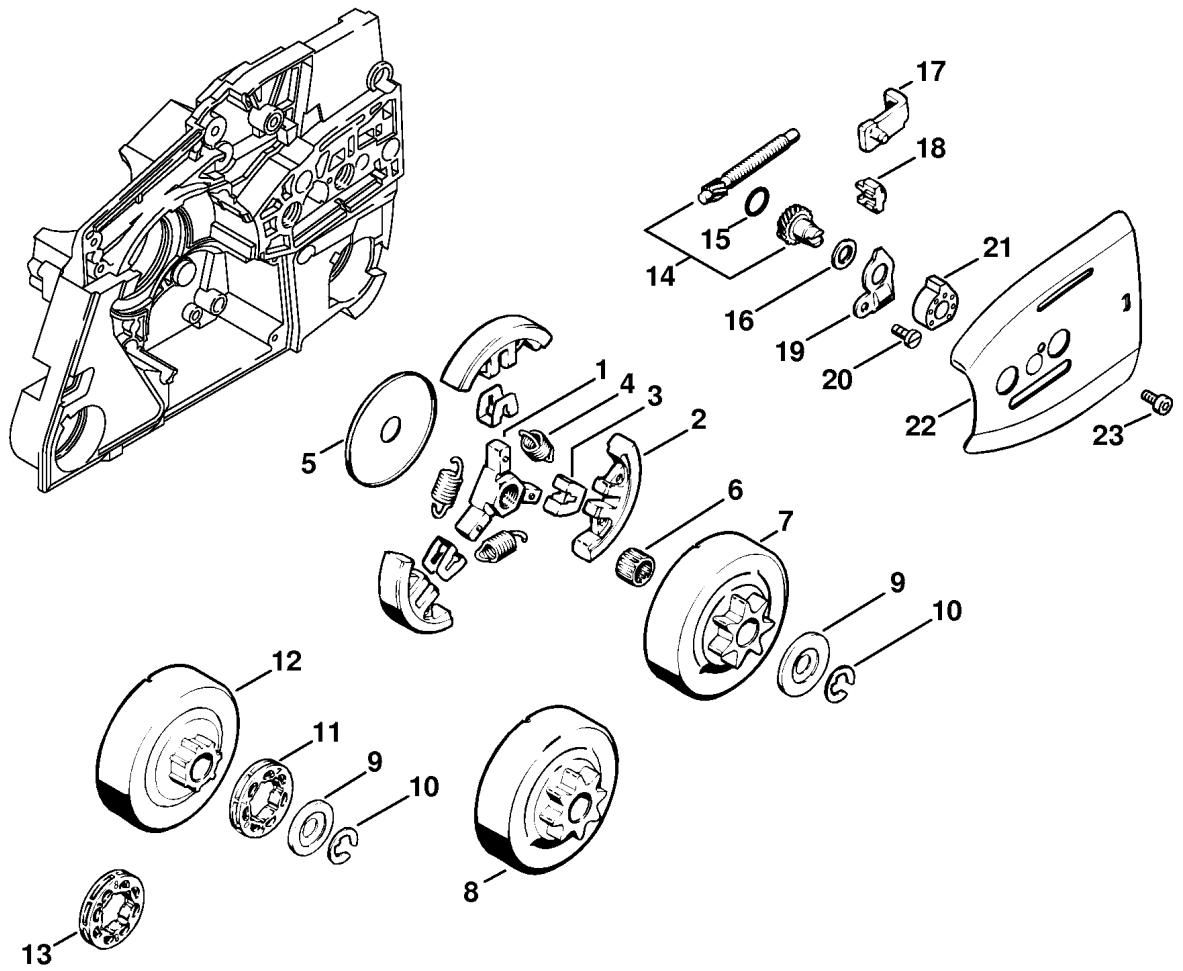




216ET026 SC

Reference	Item number	Qty	Description
1	1122 649 5000	1	Sealing ring B4x2
2	1124 640 3201	1	Oil pump adjustable (1.75 mm stroke) □ 4, 6 - 15
3	1124 640 3203	1	Oil pump (2.35 mm stroke) (B) □ 5 - 15
4	1124 007 1029	1	Set pump piston with worm □ 6 - 10
5	1124 007 1013	1	Set pump piston with worm (B) □ 6 - 10
6	0000 958 0706	2	Washer
7	0000 997 0842	1	Compression spring
8	9643 003 0910	1	Sealing ring 10x14x3
9	1119 647 1800	1	Spur gear
10	0000 958 0402	1	Washer
11	1124 647 7810	1	Washer
12	0000 988 6220	1	Plug
13	9646 945 0160	2	O-ring 4x2
14	9380 620 1090	1	Roll pin 2x10
15	1124 647 4801	1	Control bolt
16	* 1124 647 4805	1	Control bolt (58.2006)
17	1124 640 7512	1	Spur gear □ 18
18	1124 647 2400	1	Spring
19	1124 021 1100	1	Cover
20	9022 313 0660	8	Spline screw IS-M4x12
21	1124 021 1115	1	Cover
22	1124 791 2800	1	Stop buffer
23	1124 664 3600	1	Deflector
24	9022 341 1310	2	Spline screw IS-M6x18
25	1124 664 0502	2	Bumper spike (1)
26	1124 664 0506	2	Bumper spike (2-4) USA, CDN, AUS, NZ
27	9214 320 0900	3	Lock nut M6
28	9008 319 1280	2	Hexagon head screw M6x16

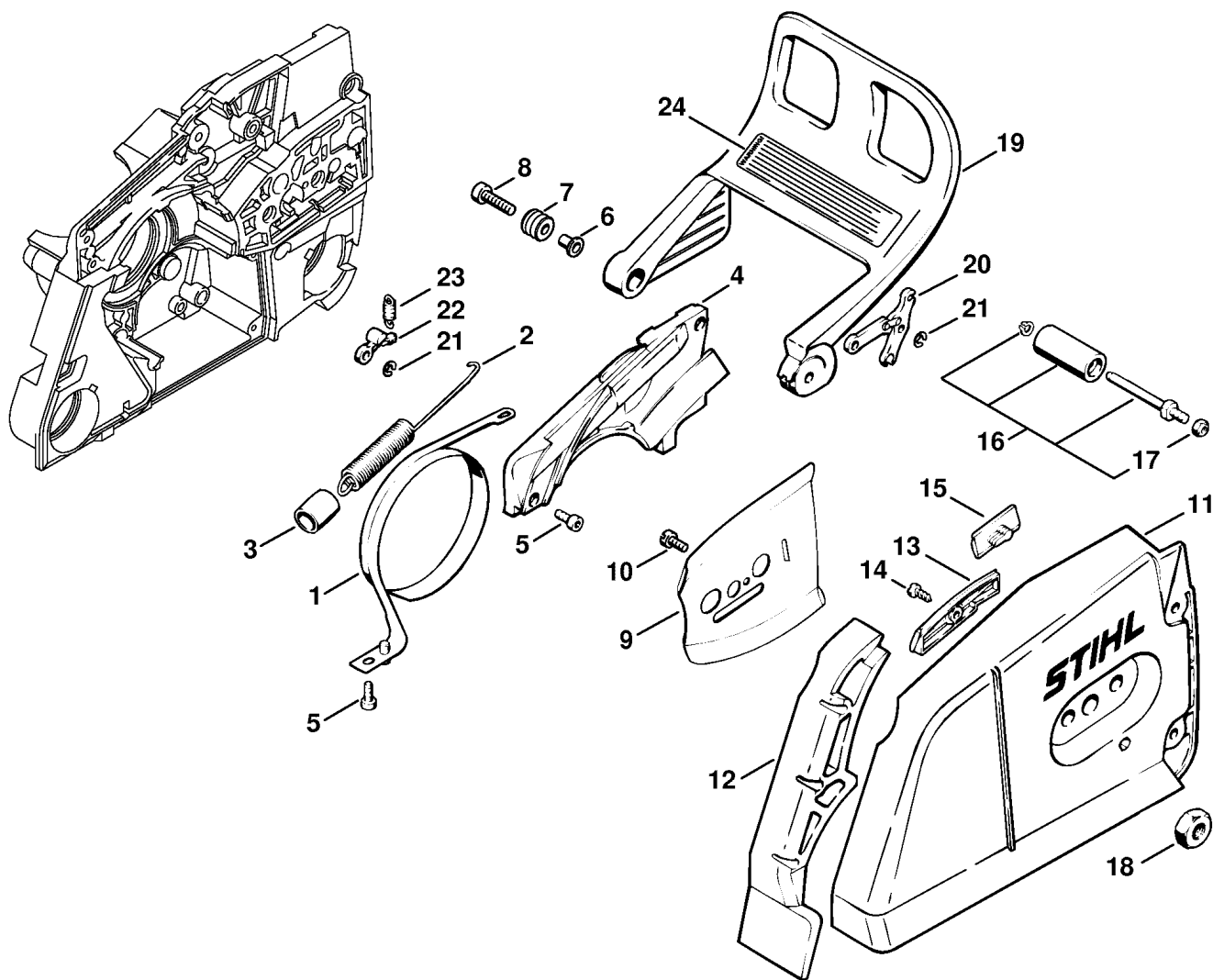
(1) MS 880, (2) MS 880-Z, (3) MS 880-R, (4) MS 880-RZ



216ET006.TG

Reference	Item number	Qty	Description
	1124 160 2005	1	Clutch □ 1 - 4
1	1124 162 3205	1	Carrier
2	1124 162 0805	3	Clutch shoe
3	1124 162 3000	3	Retainer
4	0000 997 5818	3	Tension spring
5	1124 162 8900	1	Washer
6	9512 933 3170	1	Needle cage 12x17x13
7	1124 640 2005	1	Chain sprocket 0.404" 7T (B) (1)
8	1124 640 2004	1	Chain sprocket 3/8" 8T (B)
9	0000 958 1236	1	Washer
10	9460 624 1001	1	E-clip 10x1.5
	1124 007 1024	1	Rim sprocket kit 0.404" 7T (2) □ 9 - 12
11	0000 642 1207	1	Rim sprocket 0.404" 7T (2)
12		1	Clutch drum (D) (2)
	1124 007 1025	1	Rim sprocket kit 3/8" 8T (B) □ 9, 10, 12, 13
13	0000 642 1216	1	Rim sprocket 3/8" 8T (B)
14	1124 007 1008	1	Spur gear / chain adjusting screw kit □ 15
15	9646 945 0490	1	O-ring 7x1.5
16	1124 664 4400	1	Brake washer
17	1124 640 1900	1	Tensioner slide
18	1124 664 1400	1	Thrust pad
19	1124 664 2210	1	Cover plate
20	9041 216 0630	1	Pan head screw M4x8
21	1124 664 4500	1	Support
22	1124 664 1001	1	Inner side plate
23	9022 313 0630	1	Spline screw IS-M4x8

(1) MS 880, (2) MS 880-Z, (3) MS 880-R, (4) MS 880-RZ

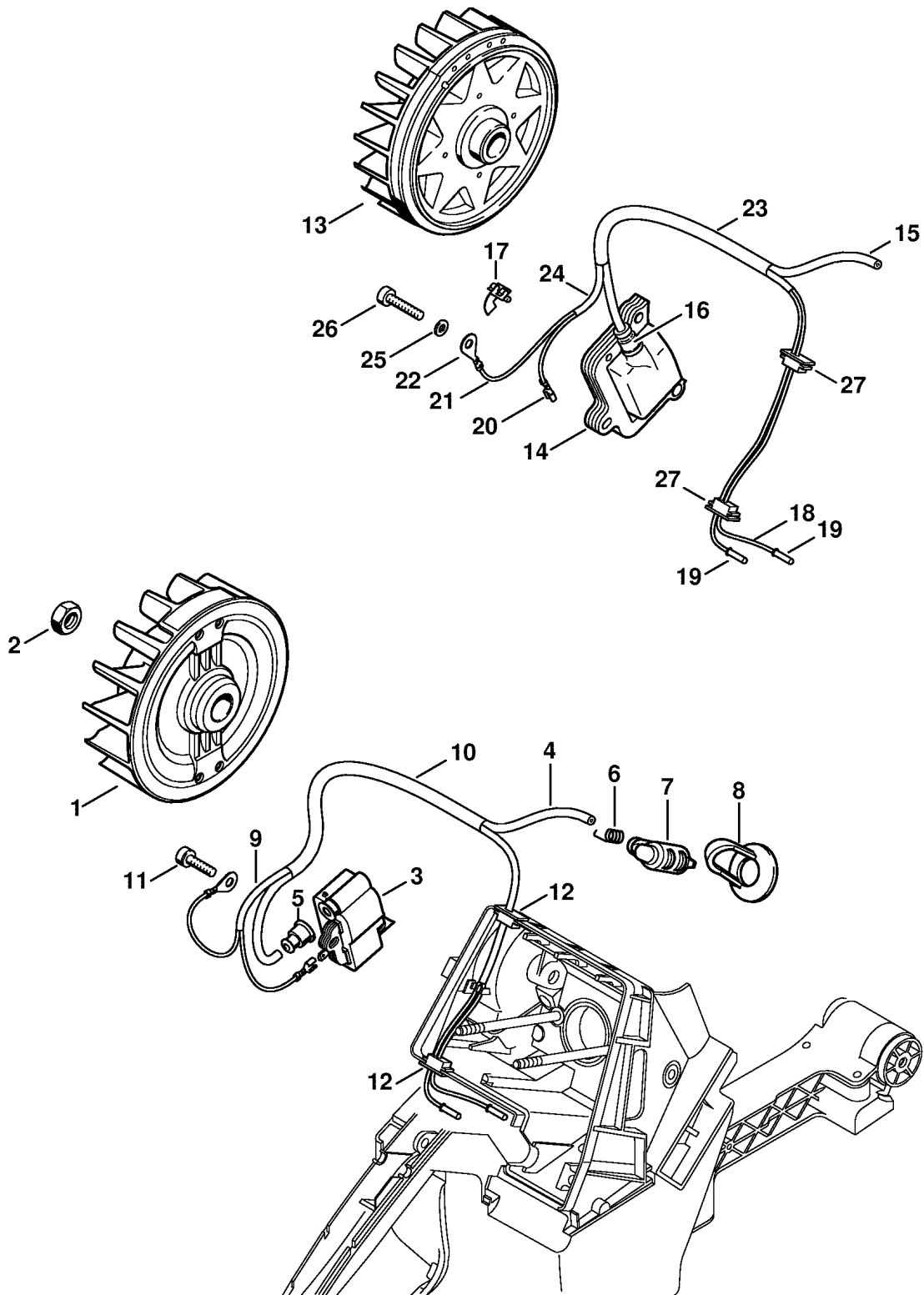


216ET033 SC

---

Reference	Item number	Qty	Description
1	1124 160 5400	1	Brake band
2	1124 160 5500	1	Tension spring
			□ 3
3	1125 162 8002	1	Hose 20 mm / 13/16"
4	1124 021 1120	1	Cover
5	9022 313 0660	3	Spline screw IS-M4x12
6	1124 792 5500	1	Bushing
7	1124 792 5505	1	Bushing
8	9022 341 1080	1	Spline screw IS-M5x35
9	1124 664 1100	1	Outer side plate (B)
10	9039 488 0340	1	Self-tapping screw M3x8 (B)
11	1124 640 1702	1	Chain sprocket cover
			□ 12 - 15
12	1124 656 1505	1	Guard
13	1124 656 2800	1	Cover plate
14	9099 021 2770	1	Self-tapping screw 3.9x13
15	1121 648 6610	2	Bumper strip
16	1124 650 7700	1	Chain catcher
			□ 17
17	9214 320 0700	1	Lock nut M5
18	0000 955 0903	2	Nut M10
19	1124 792 9110	1	Hand guard
20	1124 160 5000	1	Lever
21	9460 624 0400	2	E-clip 4
22	1121 162 5010	1	Lever
23	0000 997 0628	1	Spring
24	0000 967 3612	1	Instruction label (2,4) USA

(1) MS 880, (2) MS 880-Z, (3) MS 880-R, (4) MS 880-RZ

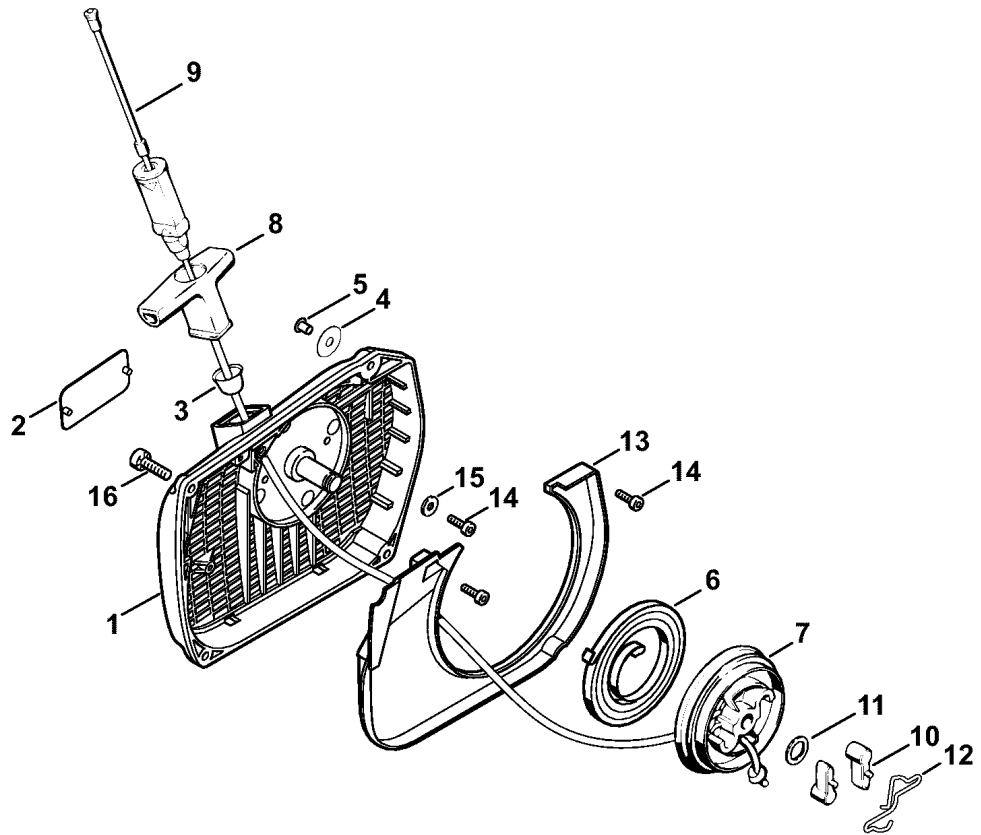


216ET027 SC

Reference	Item number	Qty	Description
1	1124 400 1201	1	Flywheel (25.2005)
2	9211 260 1340	1	Hexagon nut M10x1
3	1124 400 1302	1	Ignition module □ 4, 5
4		1	Ignition lead 243 mm (D)
	0000 405 0600	1	Ignition lead 1 m (A,B)
	0000 930 2251	1	Ignition lead 10 m (A,B)
5	0000 989 1002	1	Grommet
6	0000 998 0604	1	Torsion spring
7	1128 405 1000	1	Spark plug boot
8	1128 084 1400	1	Cover
9	1124 440 3000	1	Wiring harness
10	1124 405 8001	1	Insulating hose
11	9022 341 1019	2	Spline screw IS-M5x20
12	1124 989 1000	2	Grommet
13	* 1124 400 1210	1	Flywheel (09.2009),(25.2005)
14	* 1124 400 1301	1	Ignition module EY-V (09.2009) □ 15 - 17
15	*	1	Ignition lead 200 mm (D) (09.2009)
16	* 0000 989 1010	1	Grommet (09.2009)
17	* 1125 448 1201	1	Lead retainer (09.2009)
18	* 1124 440 1101	1	Short circuit wire (09.2009) □ 19, 20
19	* 1119 442 7000	1	Contact sleeve (09.2009)
20	* 0751 030 8957	1	Terminal socket 4.8-1/0.8 (09.2009)
	* 0751 010 1110	1	Lead 10 m / 33' (A,B) (09.2009)
21	* 1124 440 2200	1	Ground wire (09.2009) □ 19, 22
22	* 0751 030 8969	1	Terminal socket A5-1.5 (09.2009)
23	* 1121 405 8001	1	Insulating hose 90 mm / 3.5" (09.2009)
24	* 1125 442 0400	1	Insulating hose 120 mm / 4.7" (09.2009)
25	* 9291 021 0120	3	Washer 5.3 (09.2009)
26	* 9022 341 1050	3	Spline screw IS-M5x25 (09.2009)
27	* 0000 989 1004	2	Grommet (09.2009)

(1) MS 880, (2) MS 880-Z, (3) MS 880-R, (4) MS 880-RZ



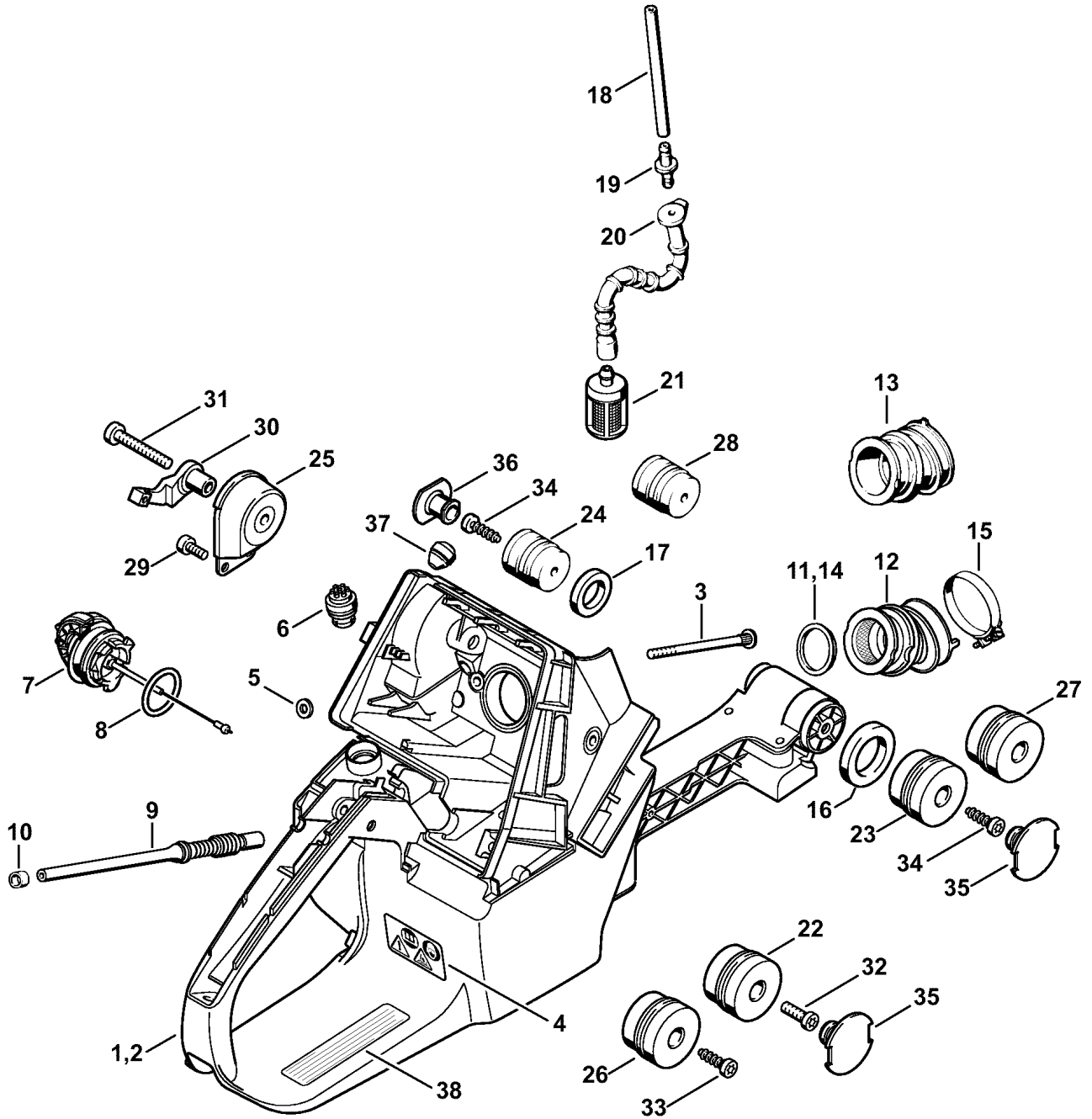


216ET029 SC

---

Reference	Item number	Qty	Description
	1124 080 2110	1	Fan housing with rewind starter □ 1 - 15
1	1124 080 1810	1	Fan housing □ 2 - 5
2	0000 967 2035	1	Nameplate STIHL
3	1110 084 9102	1	Bushing
4	0000 958 0607	1	Washer
5	9416 868 6530	1	Hollow rivet 6.5x0.5x6.8
6	1124 190 0605	1	Rewind spring
7	1124 195 0400	1	Rope rotor
8	1122 190 3400	1	Starter grip ElastoStart □ 9
9	1122 190 2900	1	Starter rope Ø 4.5 mm
	0000 930 2268	1	Starter rope Ø 4.5mm / 28 pieces (B)
10	1124 195 7200	2	Pawl
11	1119 162 8925	1	Washer Ø 12 mm
12	1124 195 3500	1	Spring
13	1124 084 7810	1	Segment
14	9022 313 0660	3	Spline screw IS-M4x12
15	9307 021 0100	1	Washer 4.3
16	9022 371 1020	3	Spline screw IS-M5x20

(1) MS 880, (2) MS 880-Z, (3) MS 880-R, (4) MS 880-RZ

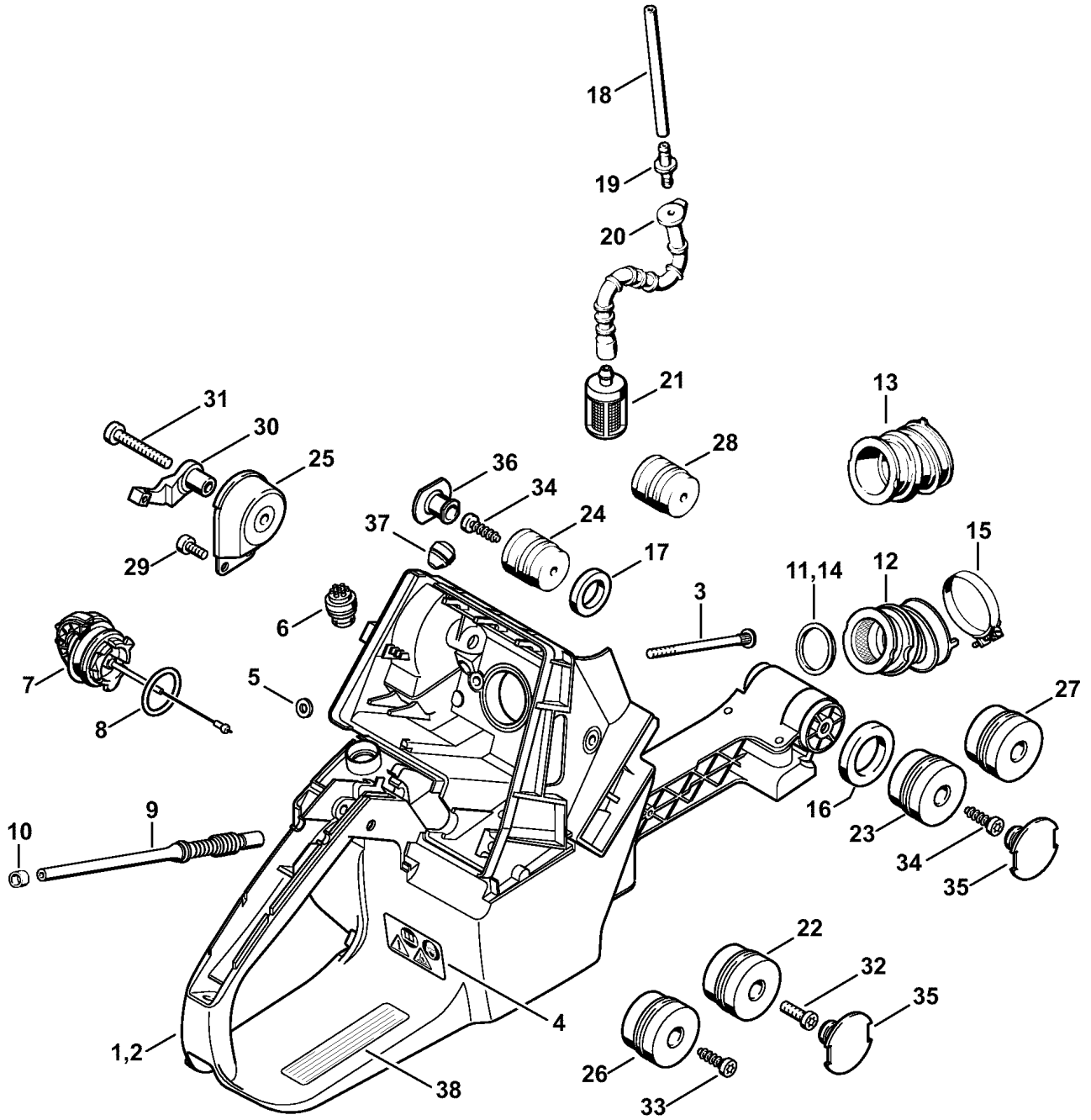


216ET028 SC

---

Reference	Item number	Qty	Description
1	1124 350 0823	1	Tank housing □ 3 - 8, 32
2 *	1124 350 0821	1	Tank housing (09.2009) □ 3 - 8
3	1124 122 6610	2	Collar screw
4	0000 967 3662	1	Warning pictogram MS
5	0000 958 0513	2	Washer
6	0000 350 5800	1	Tank vent
7	0000 350 0525	1	Filler cap □ 8
8	9645 948 7734	1	O-ring 25x3.5
9	1124 141 8603	1	Impulse hose
10	1125 647 8200	1	Sleeve
11	1124 141 1801	1	Sleeve
12	1124 141 2202	1	Manifold
13 *	1124 141 2201	1	Manifold (09.2009)
14 *	1124 141 1800	1	Sleeve (09.2009)
15	9771 021 2630	1	Hose clip 38x7
16	1124 791 8400	1	Ring
17	1119 791 8400	1	Ring
18	1124 358 7705	1	Hose 130 mm / 5 1/8"
19	1124 122 3900	1	Connector
20	1124 358 7700	1	Hose
21	0000 350 3504	1	Pickup body

(1) MS 880, (2) MS 880-Z, (3) MS 880-R, (4) MS 880-RZ

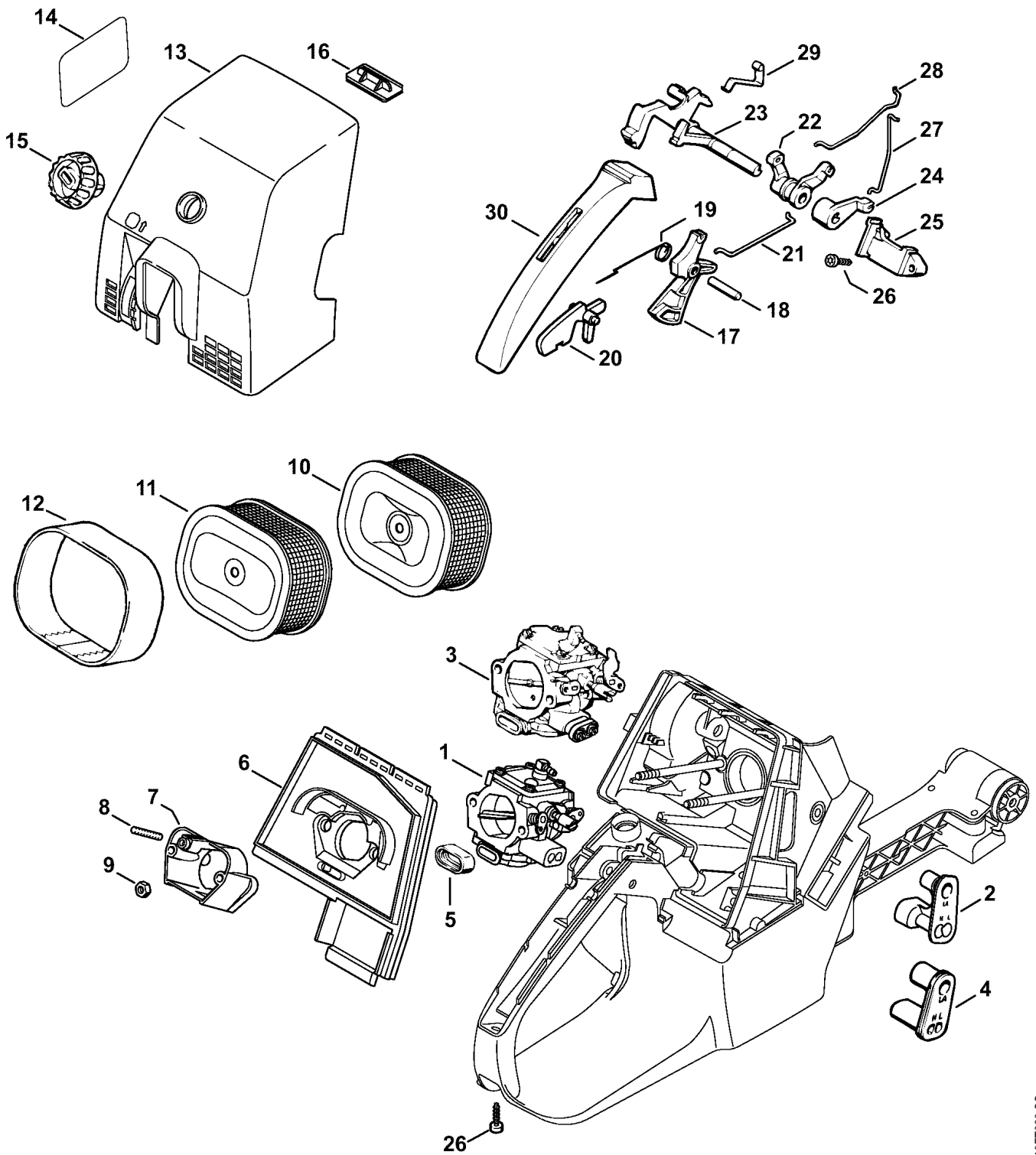


216ET028 SC

---

Reference	Item number	Qty	Description
			AV system normal:
22	1124 790 9900	1	Annular buffer (1,2)
23	1124 790 9901	1	Annular buffer (1,2)
24	1121 790 9912	1	Annular buffer (1,2)
25	1124 790 9920	1	Annular buffer (1,2)
			AV system hard:
25	1124 790 9920	1	Annular buffer (3,4)
26	1124 790 9908	1	Annular buffer (3,4)
27	1124 790 9900	1	Annular buffer (3,4)
28	1124 790 9905	1	Annular buffer (3,4)
29	9022 341 0960	2	Spline screw IS-M5x12
30	1124 791 7605	1	Support
31	9022 341 1400	1	Spline screw IS-M6x40
32	9022 341 1310	1	Spline screw IS-M6x18
33	* 9074 478 4435	1	Pan head self-tapping screw IS-P6x19 (09.2009)
34	9074 478 4435	2	Pan head self-tapping screw IS-P6x19
35	1124 791 7300	2	Plug
36	1119 791 7306	1	Plug
37	1125 791 2810	1	Stop buffer
38	0000 967 3500	1	Instruction label USA

(1) MS 880, (2) MS 880-Z, (3) MS 880-R, (4) MS 880-RZ



216ET030 SC

Reference	Item number	Qty	Description
1	1124 120 0611	1	Carburetor WG-12
2	1124 123 7502	1	Grommet
3 *	1124 120 0609	1	Carburetor HT-12E (09.2009)
4 *	1124 123 7501	1	Grommet (09.2009)
5	1124 121 9100	1	Bushing
6	1124 124 3420	1	Filter base
7	1124 120 2200	1	Flange
			□ 8
8	9121 319 0960	1	Stud M5x12x9
9	9216 261 0700	2	Hexagon nut M5
10	0000 120 1653	1	Air filter, wire mesh (1)
11	0000 120 1654	1	Air filter HD (2-4)
			□ 12
12	0000 141 0300	1	Prefilter (2-4)
13	1124 141 0510	1	Filter cover
14	0000 967 3749	1	Warning pictogram Filler cap (2,4) USA, CDN, AUS, NZ
15	1124 140 9500	1	Twist lock
16	1128 141 4001	1	Slide
17	1124 182 1000	1	Throttle trigger
18	9371 470 2640	1	Cylindrical pin 5x24
19	1117 182 4500	1	Torsion spring
20	1117 182 0805	1	Trigger interlock
21		1	Throttle rod (D)
22	1124 180 4050	1	Double lever
			□ 21
23	1124 182 0900	1	Switch shaft
24	1124 185 2000	1	Choke lever
25	1124 182 4400	1	Mount
26	9074 478 3076	2	Pan head self-tapping screw IS-P4x19
27	1124 182 1505	1	Throttle rod
28	1124 185 1900	1	Choke rod
29	1124 442 1600	1	Contact spring
30	1124 791 0600	1	Handle molding

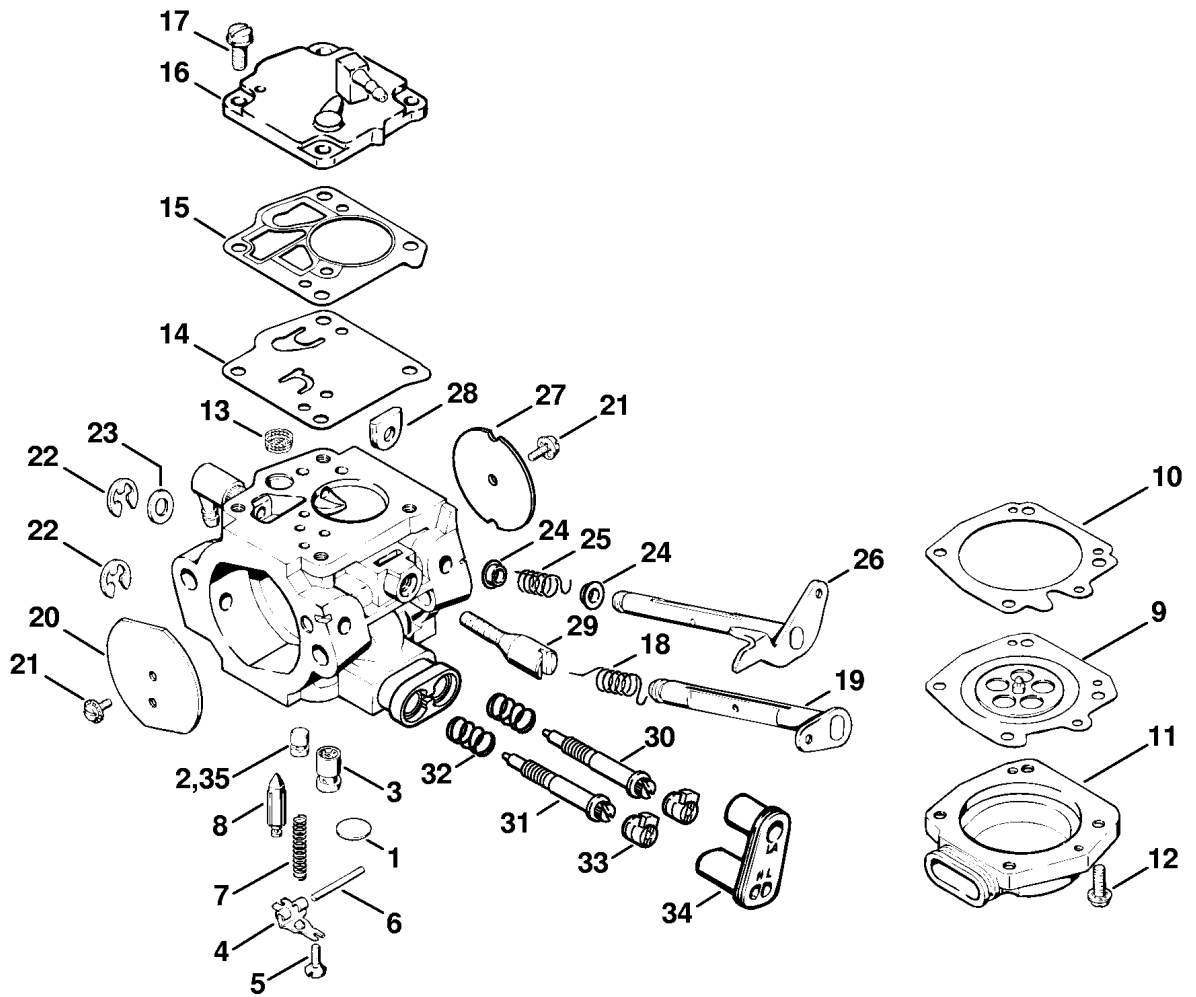
(1) MS 880, (2) MS 880-Z, (3) MS 880-R, (4) MS 880-RZ





Reference	Item number	Qty	Description
	1124 120 0611	1	Carburetor WG-12 □ 1 - 29
1	1124 121 5609	1	Fixed jet 0.88
2	1117 121 5000	1	Inlet control lever
3	1114 122 7400	1	Round head screw
4	1117 121 9200	1	Spindle
5	1124 122 3002	1	Spring
6	4116 121 5100	1	Inlet needle
7	1116 129 0900	1	Gasket
8	1124 121 4700	1	Metering diaphragm
9	1124 121 0804	1	End cover
10	1124 122 7400	4	Round head screw
11	1114 121 7800	1	Strainer
12	1115 121 4800	1	Pump diaphragm
13	1115 129 1100	1	Gasket
14	1124 120 2600	1	Pump cover
15	1115 122 7100	4	Round head screw
16	1124 122 3203	1	Torsion spring
17	1124 120 7202	1	Choke shaft with lever
18	1124 121 2901	1	Choke shutter
19	4224 122 7801	2	Oval head screw
20	1117 122 9000	2	E-clip
21	1124 121 8700	2	Bushing
22	1124 122 3204	1	Torsion spring
23	1124 120 7101	1	Throttle shaft with lever
24	1124 121 3302	1	Throttle shutter
25	1122 121 7700	1	Clamp
26	1124 122 6201	1	Idle speed adjustment screw
27	1124 122 6804	1	Low speed adjustment screw
28	1124 122 6706	1	High speed adjustment screw
29	4203 121 2700	2	Cap
	1124 007 1061	1	Set of carburetor parts □ 7, 8, 12, 13

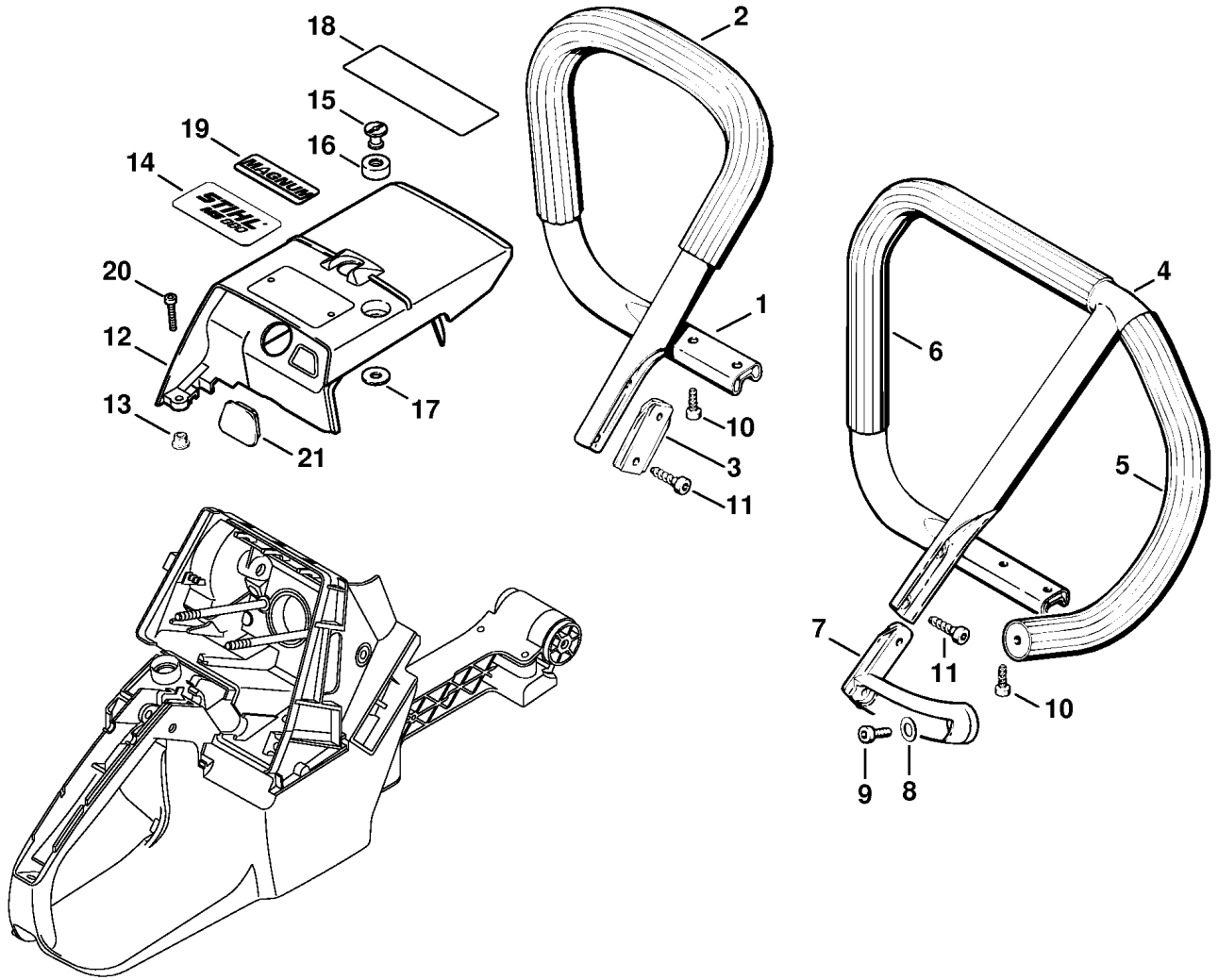
(1) MS 880, (2) MS 880-Z, (3) MS 880-R, (4) MS 880-RZ



216ET020 SC

Reference	Item number	Qty	Description
	* 1124 120 0609	1	Carburetor HT-12E (09.2009) □ 1 - 33
1	* 1110 122 9410	1	Plug (09.2009)
2	* 1124 121 5604	1	Fixed jet 1.04 (09.2009)
3	* 1124 121 5405	1	Valve jet (09.2009)
4	* 1124 121 5000	1	Inlet control lever (09.2009)
5	* 1110 122 7800	1	Oval head screw (09.2009)
6	* 1110 121 9200	1	Spindle (09.2009)
7	* 1124 122 3001	1	Spring (09.2009)
8	* 1110 121 5100	1	Inlet needle (09.2009)
9	* 1110 121 4700	1	Metering diaphragm (09.2009)
10	* 1110 129 0900	1	Gasket (09.2009)
11	* 1124 121 0803	1	End cover (09.2009)
12	* 1124 122 7102	4	Screw (09.2009)
13	* 4221 121 7800	1	Strainer (09.2009)
14	* 1124 121 4800	1	Pump diaphragm (09.2009)
15	* 1110 129 1110	1	Gasket (09.2009)
16	* 1124 121 0802	1	End cover (09.2009)
17	* 1110 122 7700	4	Oval head screw (09.2009)
18	* 1124 122 3200	1	Torsion spring (09.2009)
19	* 1124 120 7200	1	Choke shaft with lever (09.2009)
20	* 1124 121 2900	1	Choke shutter (09.2009)
21	* 1110 122 7400	2	Round head screw (09.2009)
22	* 1110 122 9005	2	E-clip (09.2009)
23	* 1124 121 8600	1	Washer (09.2009)
24	* 4221 122 9100	2	Bushing (09.2009)
25	* 1124 122 3202	1	Torsion spring (09.2009)
26	* 1124 120 7100	1	Throttle shaft with lever (09.2009)
27	* 1124 121 3301	1	Throttle shutter (09.2009)
28	* 1124 121 7700	1	Clamp (09.2009)
29	* 1124 122 6200	1	Idle speed adjustment screw (09.2009)
30	* 1124 122 6803	1	Low speed adjustment screw (09.2009)
31	* 1124 122 6703	1	High speed adjustment screw (09.2009)
32	* 4205 122 3000	2	Spring (09.2009)
33	* 1124 121 2700	2	Cap (09.2009)
34	* 1124 123 7501	1	Grommet (09.2009)
35	* 1124 121 5603	1	Fixed jet 1.00 (B) High altitude (09.2009)
	* 1124 007 1060	1	Set of carburetor parts (09.2009) □ 9, 10, 14, 15

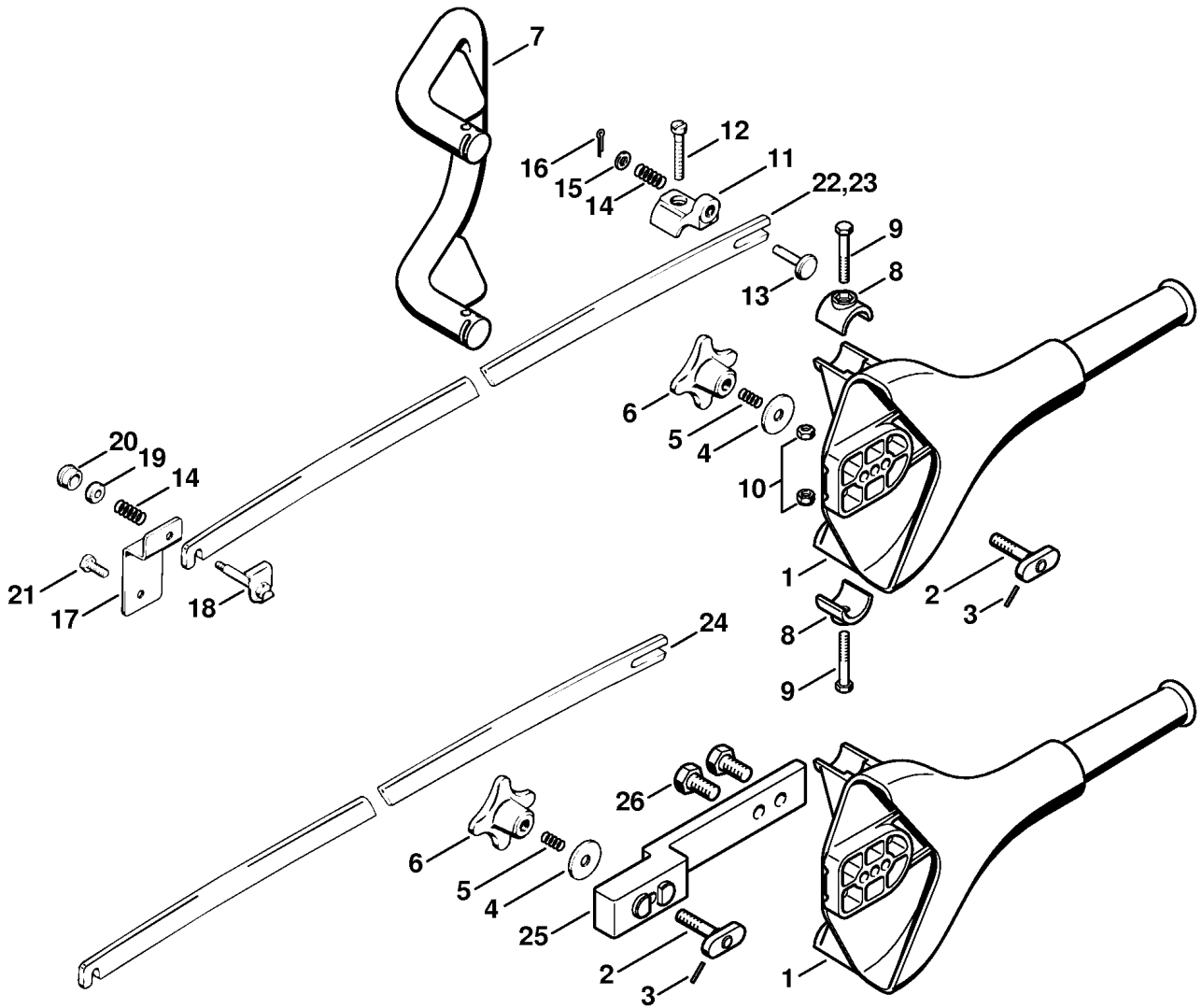
(1) MS 880, (2) MS 880-Z, (3) MS 880-R, (4) MS 880-RZ



216ET031 SC

Reference	Item number	Qty	Description
1	1124 790 1721	1	Handlebar with hose (1,2) □ 2
2		1	Handle hose 450 mm / 17 13/16" (D) (1,2)
	0000 791 2005	1	Handle hose Ø 23 mm x 5m / 1x197" (B)
3	1124 791 5105	1	Stiffener (1,2)
4	1124 790 3620	1	Wrap around handlebar with hose (3,4) □ 5 - 9
5		1	Handle hose 325 mm / 12 13/16" (D) (3,4)
6		1	Handle hose 415 mm / 16 3/8" (D) (3,4)
7	1124 791 5500	1	Elbow connector (3,4)
8	9291 021 0140	1	Washer 6.4 (3,4)
9	9022 341 1300	1	Spline screw IS-M6x20 (3,4)
10	9074 478 4475	2	Pan head self-tapping screw IS-P6x21.5
11	9074 478 4675	2	Pan head self-tapping screw IS-P6x32.5
12	1124 080 1602	1	Shroud □ 13 - 18
13	0000 963 0808	2	Bushing
14	1124 967 1501	1	Model plate MS 880
15	1121 084 7000	1	Slotted nut
16	1121 084 6901	1	Insulator
17	1124 084 3000	1	Shim
18	1124 084 8300	1	Reflector foil
19	0000 967 1593	1	Model plate Magnum (2,4) USA, CDN, AUS, NZ
20	9022 371 1020	2	Spline screw IS-M5x20
21	1118 145 9000	1	Plug (B)

(1) MS 880, (2) MS 880-Z, (3) MS 880-R, (4) MS 880-RZ

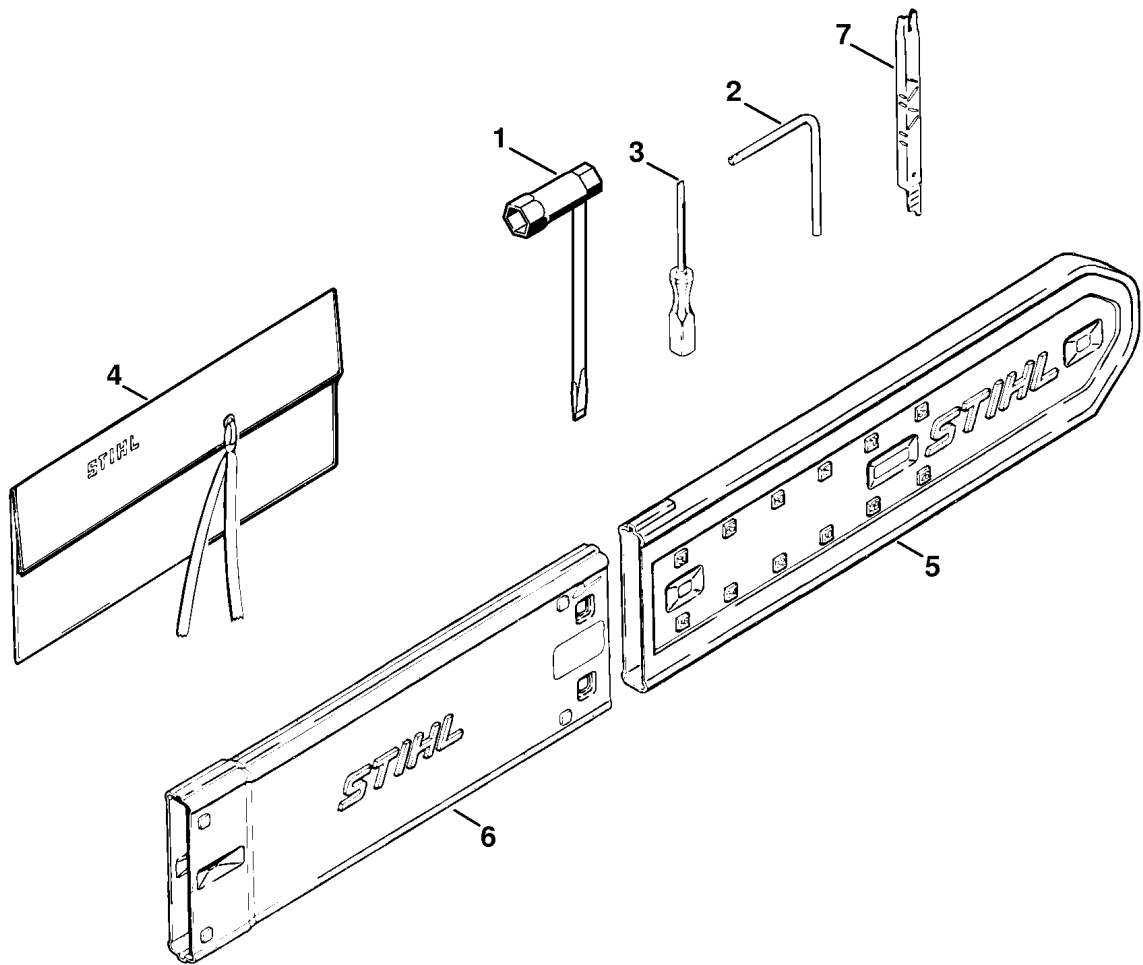


129ET043 SC

Reference	Item number	Qty	Description
1	1124 660 2500	1	Helper's handle (B) □ 2 - 10
2	1109 660 0600	1	Tensioning bolt (B) □ 3
3	9380 620 1120	1	Roll pin 2x14 (B)
4	0000 958 2208	1	Washer (B)
5	0000 997 0620	1	Compression spring (B)
6	1109 660 0500	1	Tensioning nut (B)
7	1109 790 2200	1	Front handle (B)
8	1109 791 9000	2	Clamp (B)
9	9007 319 1400	2	Hexagon head screw M6x40 (B)
10	9214 320 0900	2	Lock nut M6 (B)
	1124 007 1018	1	Chain guard kit 105 cm / 42" (B) □ 11 - 22
11	1109 650 8400	1	Support (B)
12	9042 216 1400	1	Pan head screw M6x40 (B)
13	1401 668 8500	1	Spring bolt (B)
14	0000 997 0901	2	Compression spring (B)
15	0000 958 0600	1	Washer (B)
16	9395 021 0790	1	Split pin 1.6x12 (B)
17	1124 656 8300	1	Support (B)
18	1401 640 8000	1	Spring bolt (B)
19	0000 961 1401	1	Ring (B)
20	1401 648 8400	1	Push button (B)
21	9008 319 1280	1	Hexagon head screw M6x16 (B)
22	1202 656 1000	1	Chain scabbard 105 cm / 42" (B)
	1124 007 1019	1	Chain guard kit 120 cm / 48" (B) □ 11 - 21, 23
23	1202 656 1001	1	Chain scabbard 120 cm / 48" (B)
	1124 007 1020	1	Chain guard kit 150 cm / 59" (B) □ 11 - 21, 24
24	1202 656 1002	1	Chain scabbard 150 cm / 59" (B)
25	1124 660 2650	1	Spacer (B) □ 26
26	9008 319 2360	2	Hexagon head screw M10x20 (B)

(1) MS 880, (2) MS 880-Z, (3) MS 880-R, (4) MS 880-RZ





171ET000 GM

---

Reference	Item number	Qty	Description
	1121 890 1400	1	Tool kit □ 1 - 4
1	1129 890 3401	1	Combination wrench
2	0812 370 1000	1	Screwdriver T27x120x70
3	0000 890 2300	1	Screwdriver
4	0000 891 0801	1	Tool roll
5	0000 792 9130	1	Chain scabbard
6	0000 792 9133	1	Chain scabbard extension up to 90 cm
7	1110 893 4000	1	Filing gauge (B)

(1) MS 880, (2) MS 880-Z, (3) MS 880-R, (4) MS 880-RZ