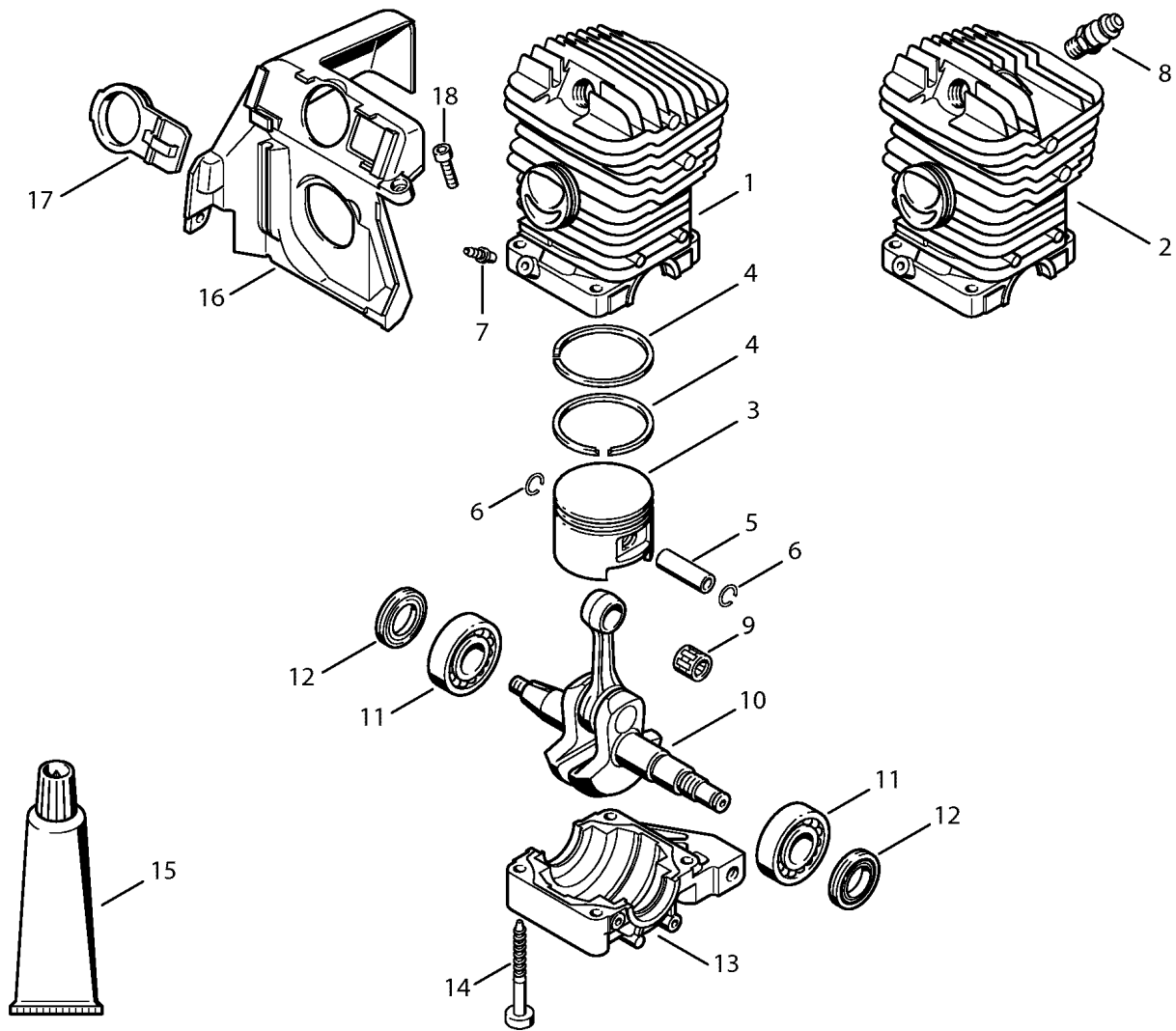


209ET019 5C

Reference	Item number	Qty	Description
1	1127 020 1217	1	Cylinder with piston Ø 46 mm (1) □ 3 - 7, 13
2 *	1127 020 1210	1	Cylinder with piston Ø 46 mm (1) (36.2004) □ 3 - 7, 13
3	1127 030 2003	1	Piston Ø 46 mm (1) □ 4 - 6
4	1118 034 3001	2	Piston ring Ø 46x1.5 mm (1)
5	1110 034 1500	1	Piston pin 10x6x32 (1)
6	9463 650 1000	2	Snap ring 10 (1)
7	0000 988 5211	1	Connector (1)
8	9512 003 2340	1	Needle cage 10x14x13 (1)
9	1127 030 0402	1	Crankshaft (1) (25.2005)
10	9503 003 0440	2	Grooved ball bearing 6203 (1)
11	9639 010 1743	2	Oil seal 17x30x4.4 (1) (14.2000)
11	9639 003 1743	2	Oil seal 17x30x4.4 (1) (14.2000)
12	1127 021 2500	1	Engine pan (1)
13	9075 478 4735	4	Pan head self-tapping screw IS-D6x52 (1)
14	0783 830 2000	1	Tube of sealant Dirko HT red (1)
15	1127 084 0900	1	Shroud (1)
16	1127 084 4100	1	Shutter (1)
17	9075 478 3015	2	Pan head self-tapping screw IS-D4x15 (1)

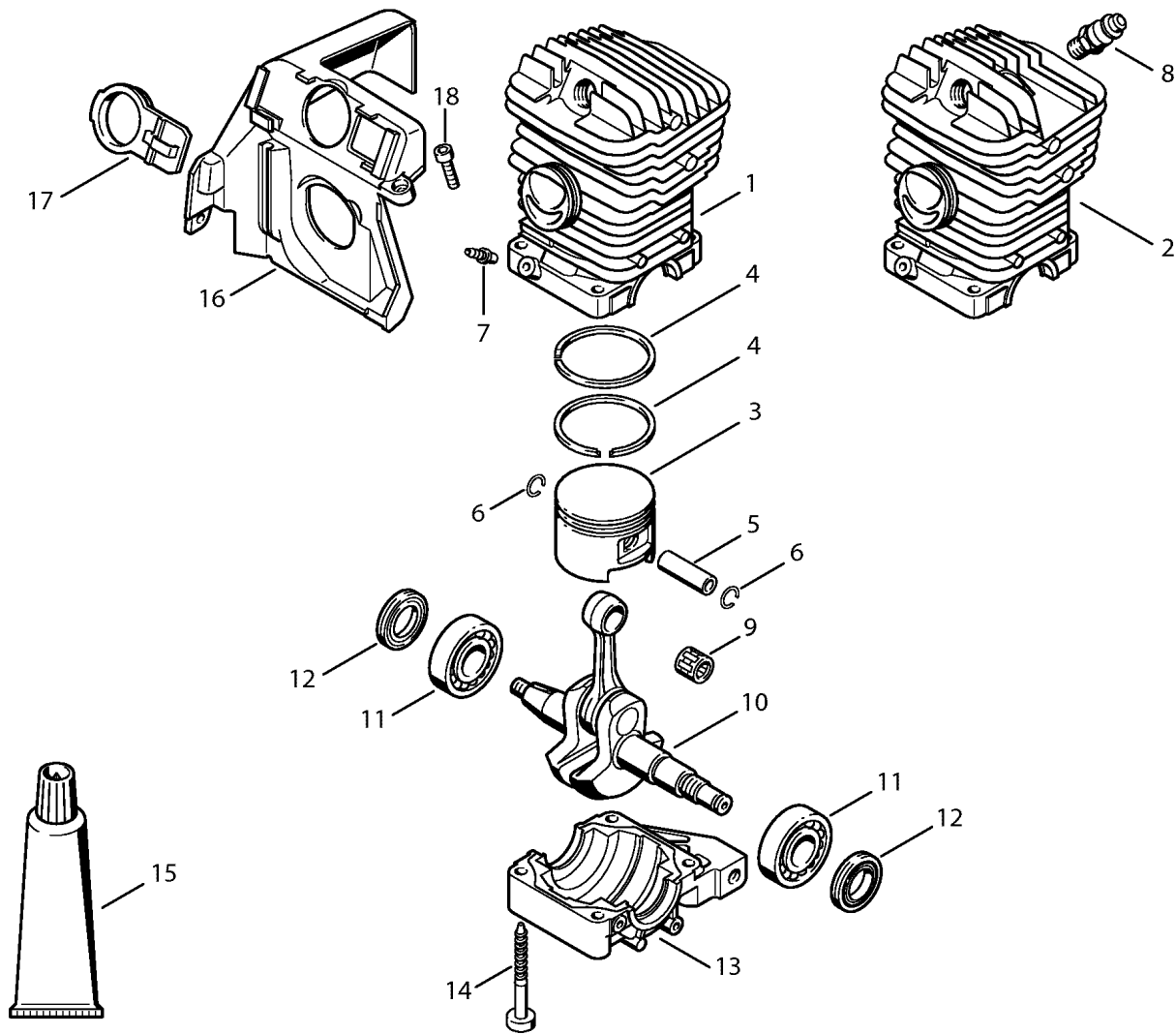
(1) MS 290, (2) MS 310, (3) MS 390



209ET020 5C

Reference	Item number	Qty	Description
1	1127 020 1214	1	Cylinder with piston Ø 47 mm (2) □ 3 - 7, 14
1	1127 020 1215	1	Cylinder with piston Ø 47 mm (2) USA □ 3 - 7, 14
2	1127 020 1218	1	Cylinder with piston Ø 47 mm (2) □ 3 - 7, 14
3	1127 030 2007	1	Piston Ø 47 mm (2) □ 4 - 6
4	1127 034 3002	2	Piston ring Ø 47x1.5 mm (2)
5	1110 034 1500	1	Piston pin 10x6x32 (2)
6	9463 650 1000	2	Snap ring 10 (2)
7	0000 988 5211	1	Connector (2)
8	1127 020 9400	1	Decompression valve (2)
9	9512 003 2340	1	Needle cage 10x14x13 (2)
10	1127 030 0402	1	Crankshaft (2) (25.2005)
10	1127 030 0411	1	Crankshaft (2) available in Brazil only (25.2005)
11	9503 003 0440	2	Grooved ball bearing 6203 (2)
12	9639 010 1743	2	Oil seal 17x30x4.4 (2) (14.2000)
12	9639 003 1743	2	Oil seal 17x30x4.4 (2) (14.2000)
13	1127 021 2500	1	Engine pan (2)
14	9075 478 4735	4	Pan head self-tapping screw IS-D6x52 (2)
15	0783 830 2000	1	Tube of sealant Dirko HT red (2)
16	1127 084 0900	1	Shroud (2)
17	1127 084 4100	1	Shutter (2)
18	9075 478 3015	2	Pan head self-tapping screw IS-D4x15 (2)

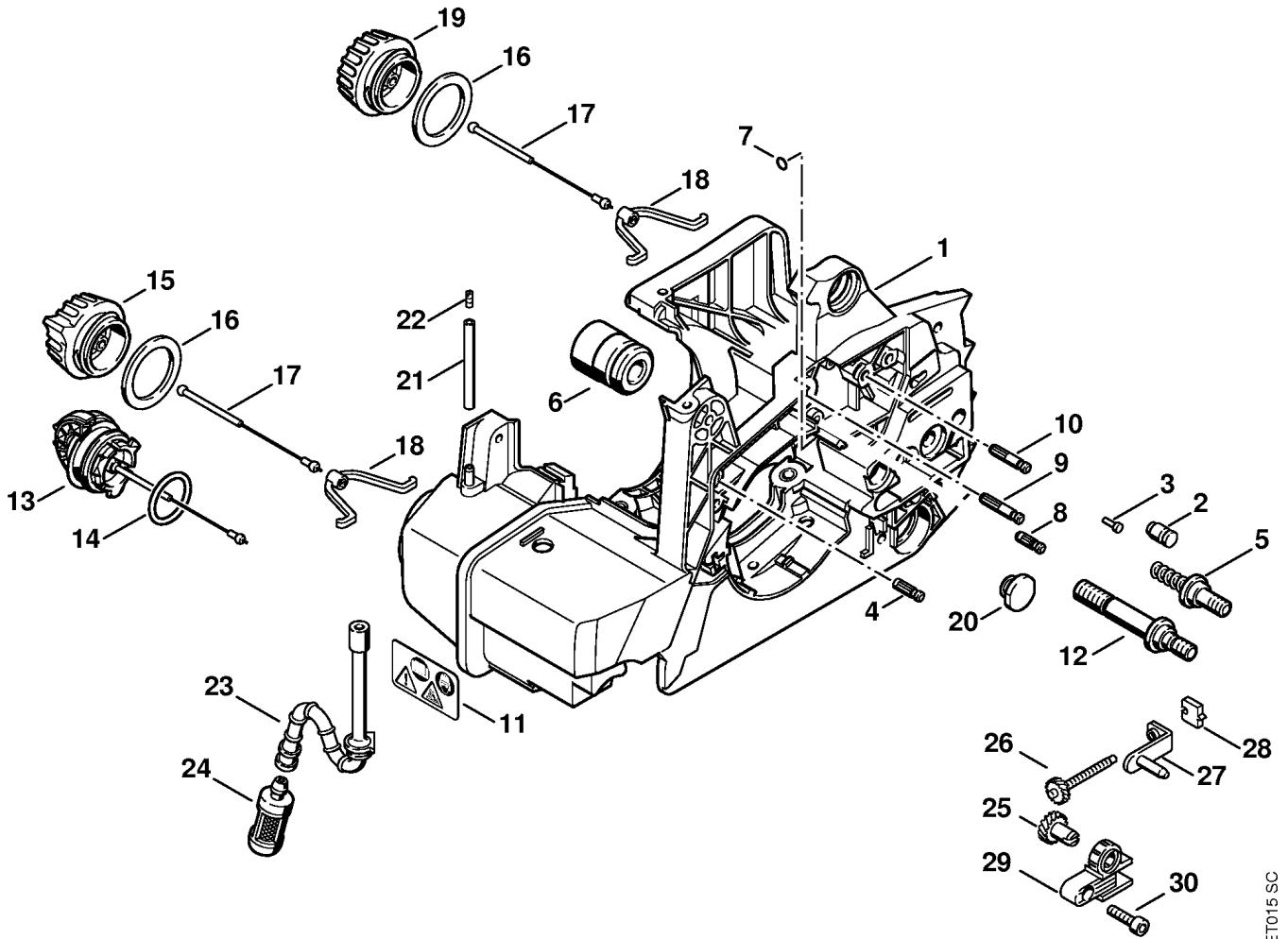
(1) MS 290, (2) MS 310, (3) MS 390



209ET020 5C

Reference	Item number	Qty	Description
1	1127 020 1213	1	Cylinder with piston Ø 49 mm (3) □ 3 - 7, 14
2	1127 020 1216	1	Cylinder with piston Ø 49 mm (3) □ 3 - 7, 14
3	1127 030 2005	1	Piston Ø 49 mm (3) □ 4 - 6
4	1127 034 3007	2	Piston ring Ø 49x1.5 mm (3)
5	1110 034 1500	1	Piston pin 10x6x32 (3)
6	9463 650 1000	2	Snap ring 10 (3)
7	0000 988 5211	1	Connector (3)
8	1127 020 9400	1	Decompression valve (3)
9	9512 003 2340	1	Needle cage 10x14x13 (3)
10	1127 030 0402	1	Crankshaft (3) (25.2005)
10	1127 030 0411	1	Crankshaft (3) available in Brazil only (25.2005)
11	9503 003 0440	2	Grooved ball bearing 6203 (3)
12	9639 010 1743	2	Oil seal 17x30x4.4 (3) (14.2000)
12	9639 003 1743	2	Oil seal 17x30x4.4 (3) (14.2000)
13	1127 021 2500	1	Engine pan (3)
14	9075 478 4735	4	Pan head self-tapping screw IS-D6x52 (3)
15	0783 830 2000	1	Tube of sealant Dirko HT red (3)
16	1127 084 0900	1	Shroud (3)
17	1127 084 4100	1	Shutter (3)
18	9075 478 3015	2	Pan head self-tapping screw IS-D4x15 (3)

(1) MS 290, (2) MS 310, (3) MS 390

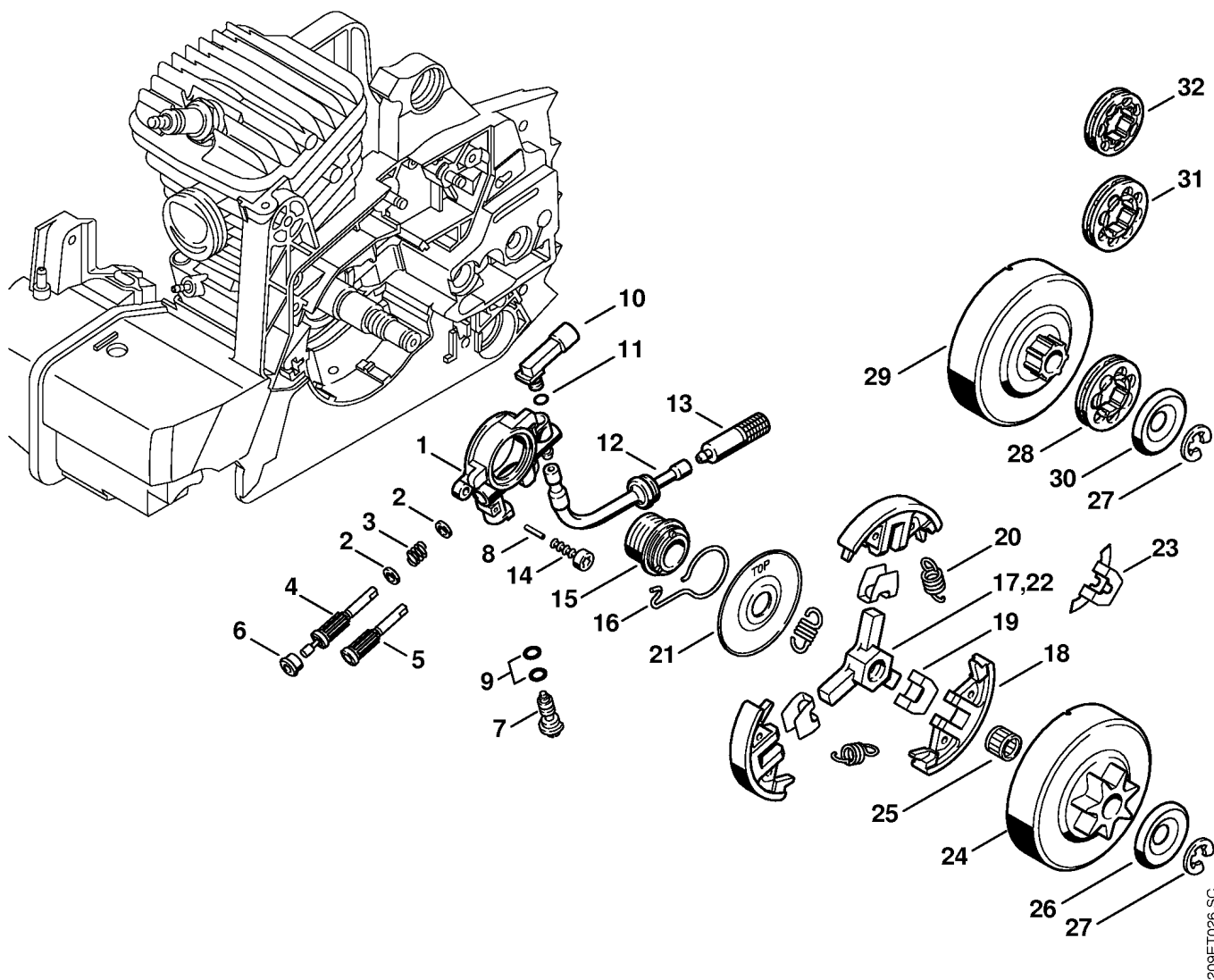


209ET015 SC

Reference	Item number	Qty	Description
1	1127 020 3003	1	Engine housing □ 2 - 11, 13
2	1128 640 9100	1	Valve
3	0000 974 1200	1	Notched pin 2.6x8
4	1120 162 5200	1	Pin
5	1127 664 2400	1	Collar screw
6	1127 790 9900	1	Annular buffer
7	9645 945 7444	1	O-ring 4x1.5
8	1121 162 5200	1	Pin
9	1123 162 5205	1	Pin
10	1123 162 5200	1	Pin
11	0000 967 3662	1	Warning pictogram MS
12	1127 664 2405	1	Collar screw
13	0000 350 0525	2	Filler cap □ 14
14	9645 948 7734	2	O-ring 25x3.5
15	* 1127 350 0500	1	Filler cap USA, BR (26.2000) □ 16 -18
16	* 0000 359 1220	1	Sealing ring USA, BR (26.2000)
17	* 0000 350 0900	1	Rope USA, BR (26.2000)
18	* 0000 353 0600	1	Hook USA, BR (26.2000)
19	* 0000 350 0520	1	Filler cap USA, BR (26.2000) □ 16 - 18
20	1123 791 7300	1	Plug
21	* 1117 350 5800	1	Tank vent → 1 56 601 767 (35.2002) □ 22
22	* 1120 358 8105	2	Vent insert → 1 56 601 767 (35.2002)
23	1127 358 7702	1	Hose
24	0000 350 3500	1	Pickup body
	1127 007 1003	1	Spur gear / chain adjusting screw kit □ 25, 26
25		1	Spur gear (D)
26		1	Adjusting screw (D)
27	1127 640 1900	1	Tensioner slide
28	1123 664 1400	1	Thrust pad
29	1127 664 2200	1	Cover
30	9075 478 3015	1	Pan head self-tapping screw IS-D4x15

(1) MS 290, (2) MS 310, (3) MS 390

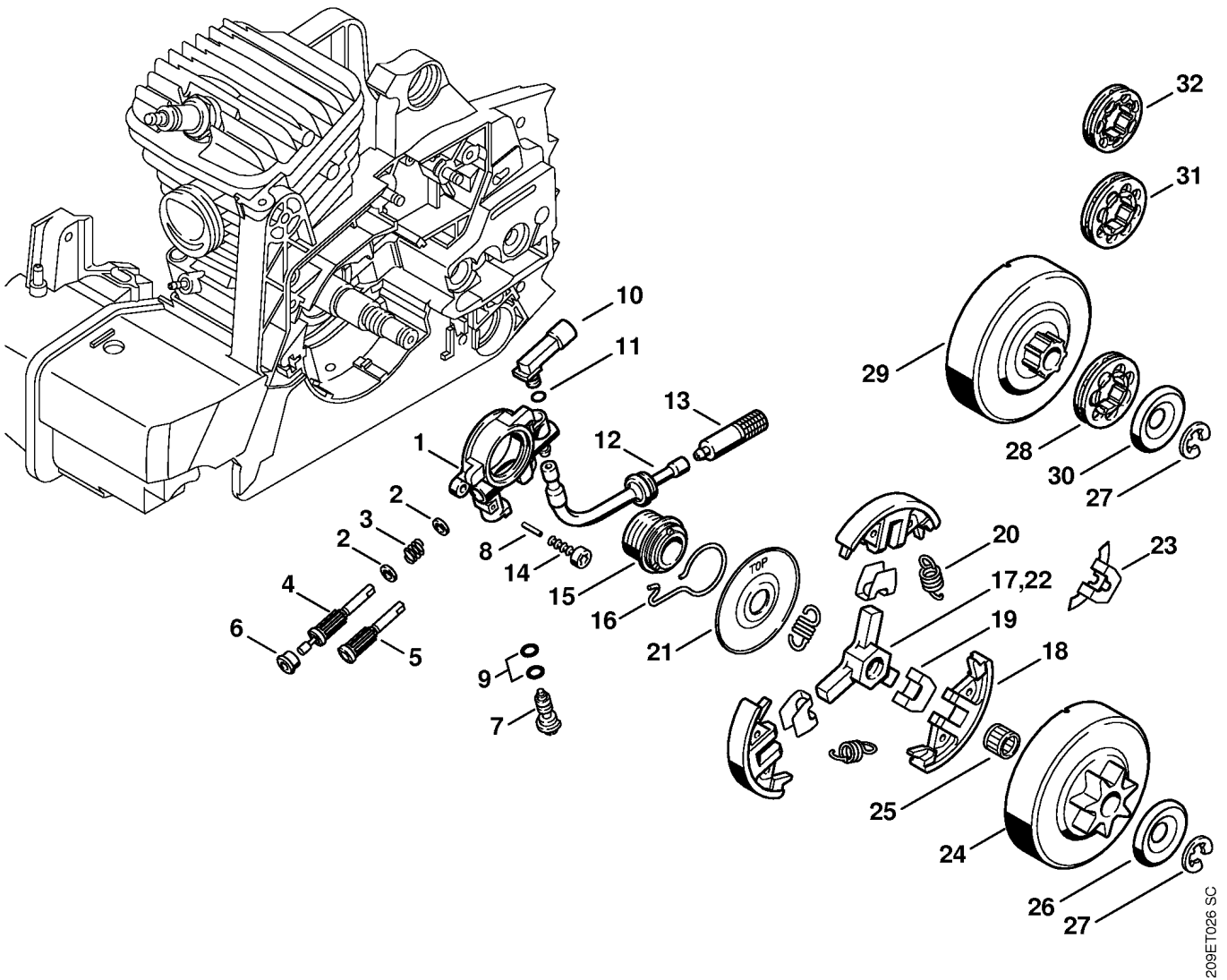




209ET026 SC

Reference	Item number	Qty	Description
1	1127 640 3204	1	Oil pump □ 2 - 4, 6 - 9
2	0000 958 0408	2	Washer
3	0000 997 0615	1	Compression spring
4	1127 647 0602	1	Pump piston 0.88 mm
5 *	1127 647 0601		Pump piston 0.88 mm (60.2006)
6	1121 641 9400	1	Bearing bushing
7	1128 647 4806	1	Control bolt
8	9380 620 1090	1	Roll pin 2x10
9	9646 945 0160	2	O-ring 4x2
10	1127 640 9200	1	Elbow connector □ 11
11	9645 945 7444	1	O-ring 4x1.5
12	1127 647 9400	1	Hose
13	1127 640 3800	1	Pickup body
14	9075 478 3015	2	Pan head self-tapping screw IS-D4x15
15	1125 640 7110	1	Worm □ 16
16	1125 647 2400	1	Spring
	1127 160 2051	1	Clutch □ 17 - 21
17	1127 162 3200	1	Carrier
18	1125 162 0802	3	Clutch shoe
19	1127 162 3000	3	Retainer
20	0000 997 0909	3	Tension spring
21	1127 162 1000	1	Cover washer
22 *	1125 162 3201	1	Carrier (26.2000)
23 *	1125 162 3000	1	Retainer (26.2000)

(1) MS 290, (2) MS 310, (3) MS 390

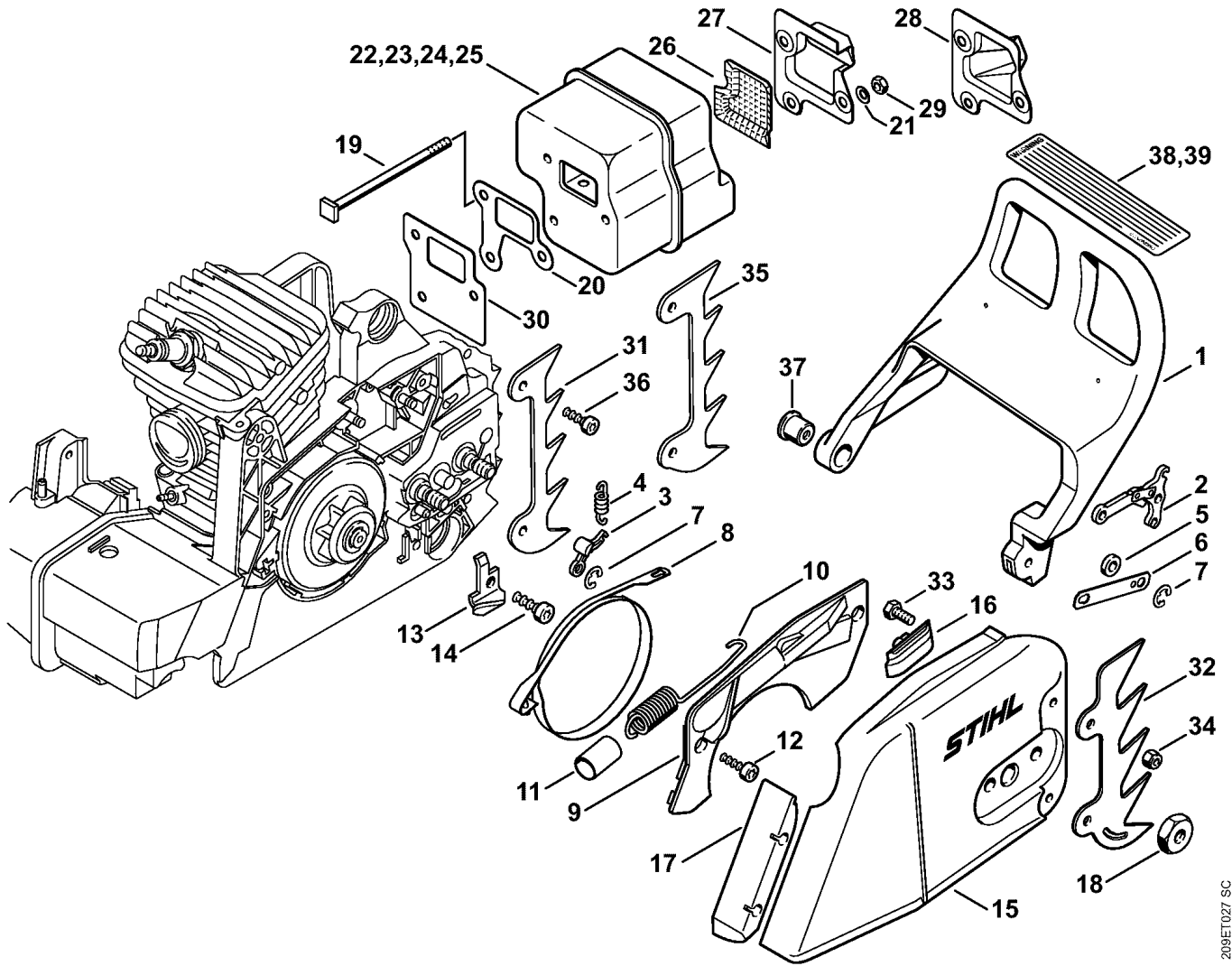


209ET026 SC

---

Reference	Item number	Qty	Description
24	1125 640 2005	1	Chain sprocket 0.325" 7T
24	1125 640 2008	1	Chain sprocket 0.325" 8T USA
24	1125 640 2004	1	Chain sprocket 3/8" 7T
25	9512 933 2260	1	Needle cage 10x13x10
26	0000 958 1021	1	Washer Ø 33 mm
27	9460 624 0801	1	E-clip 8x1.3
	1125 007 1002	1	Rim sprocket kit 3/8" 7T □ 27 - 30
28	0000 642 1231	1	Rim sprocket 3/8" 7T
29		1	Clutch drum (D)
30	0000 958 1022	1	Washer Ø 27 mm
	1125 007 1000	1	Rim sprocket kit 0.325" 8T □ 27, 29 - 31
31	0000 642 1234	1	Rim sprocket 0.325" 8T
	1125 007 1001	1	Rim sprocket kit 0.325" 7T □ 27, 29, 30, 32
32	0000 642 1236	1	Rim sprocket 0.325" 7T

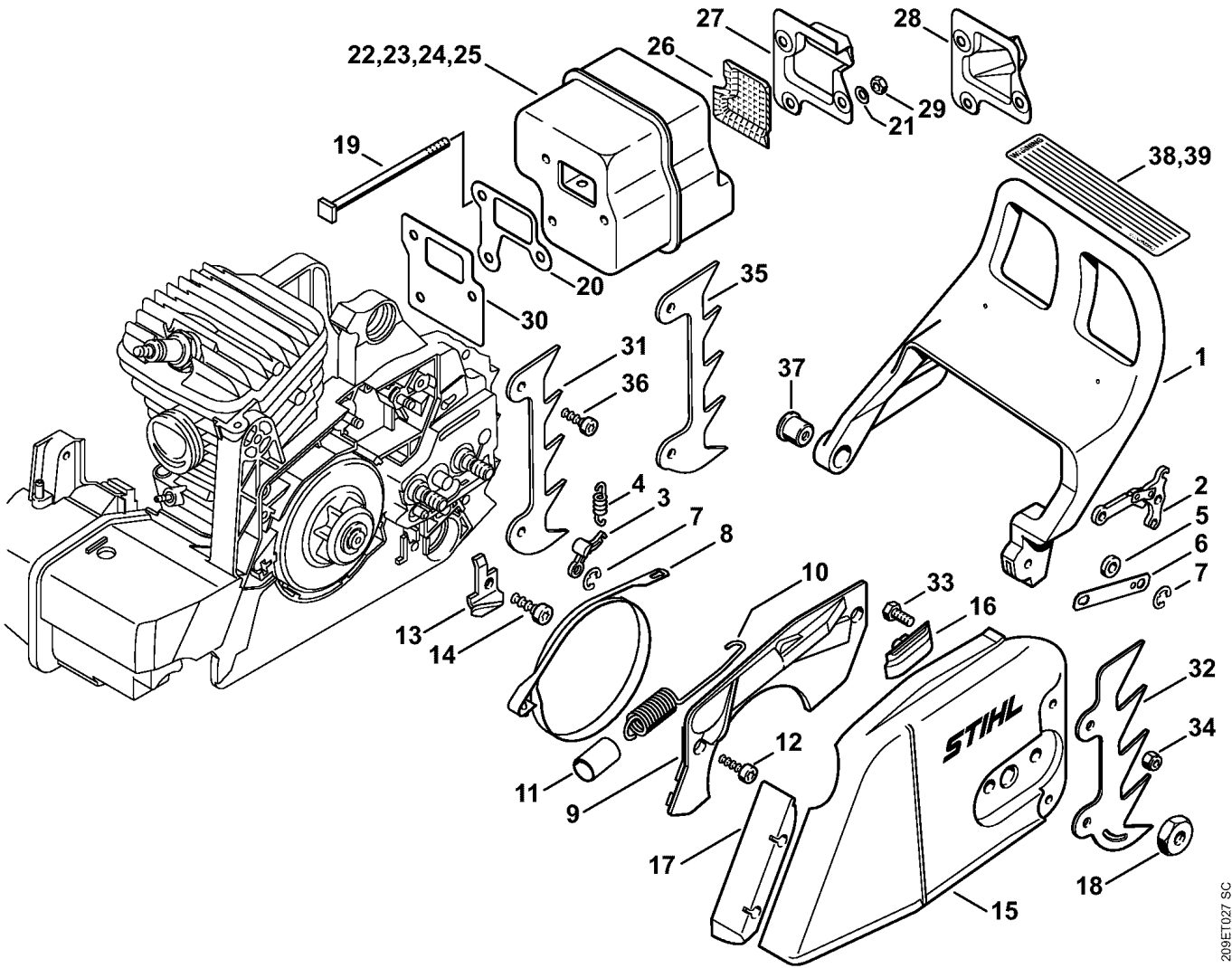
(1) MS 290, (2) MS 310, (3) MS 390



209ETU27 SC

Reference	Item number	Qty	Description
1	1127 792 9100	1	Hand guard
2	1128 160 5000	1	Lever
3	1121 162 5010	1	Lever
4	0000 997 0628	1	Spring
5	0000 958 0521	1	Washer
6	1127 162 5800	1	Strap
7	9460 624 0400	2	E-clip 4
8	1125 160 5400	1	Brake band
	1127 160 5550	1	Tension spring with cover □ 9 - 11
9	1127 021 1102	1	Cover
10		1	Tension spring (D)
11	1125 162 8002	1	Hose 20 mm / 13/16"
12	9075 478 3015	2	Pan head self-tapping screw IS-D4x15
13	1119 656 7705	1	Chain catcher
14	9075 478 4115	1	Pan head self-tapping screw IS-D5x16
15	1128 640 1706	1	Chain sprocket cover □ 16, 17
16	1121 648 6610	4	Bumper strip
17	1125 656 1501	1	Guard
18	0000 955 0801	2	Hexagon nut M8
19	1127 148 1200	3	Screw
20	1127 149 0650	1	Muffler gasket □ 21
21	9331 630 0120	3	Conical spring washer 5

(1) MS 290, (2) MS 310, (3) MS 390

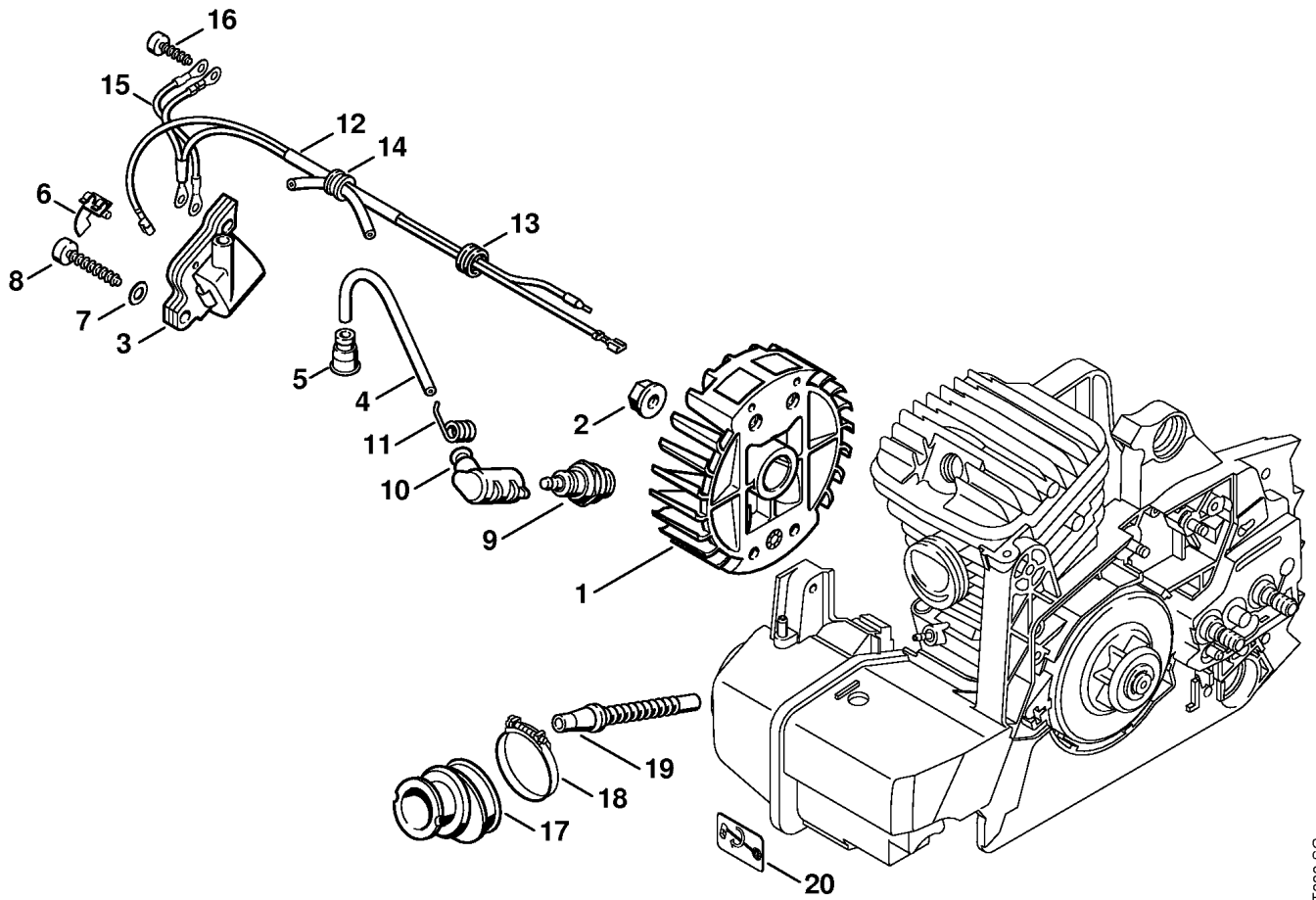


209ET027 SC

Reference	Item number	Qty	Description
22	1127 140 0601	1	Muffler Standard □ 28
23	1127 140 0605	1	Muffler AUS, NZ □ 26, 27
24	1127 140 0607	1	Muffler (1) USA, CDN □ 26, 27
25	1127 140 0606	1	Muffler (2,3) USA, CDN □ 26, 27
25 *	1127 140 0606	1	Muffler (1) USA, CDN (36.2004) □ 26, 27
26	1127 141 9000	1	Screen USA, CDN, AUS, NZ
27	1127 145 1606	1	Cover USA, CDN, AUS, NZ
28	1127 145 1601	1	Cover Standard
29	9216 263 0700	3	Hexagon nut M5
30	1127 149 0601	1	Muffler gasket (3) USA, CDN
31	1128 664 0500	1	Bumper spike (B)
32	0000 660 0850	1	Bumper spike (B) □ 33, 34
33	9008 319 0960	2	Hexagon head screw M5x12 (B)
34	9214 320 0700	2	Lock nut M5 (B)
35	1127 664 0500	1	Bumper spike USA, AUS, CDN
36	9075 478 4115	2	Pan head self-tapping screw IS-D5x16 (B)
37	1127 791 7200	1	Sleeve
38	0000 967 3630	1	Instruction label (1,2) USA, CDN
39	0000 967 3612	1	Instruction label (3) USA, CDN

(1) MS 290, (2) MS 310, (3) MS 390

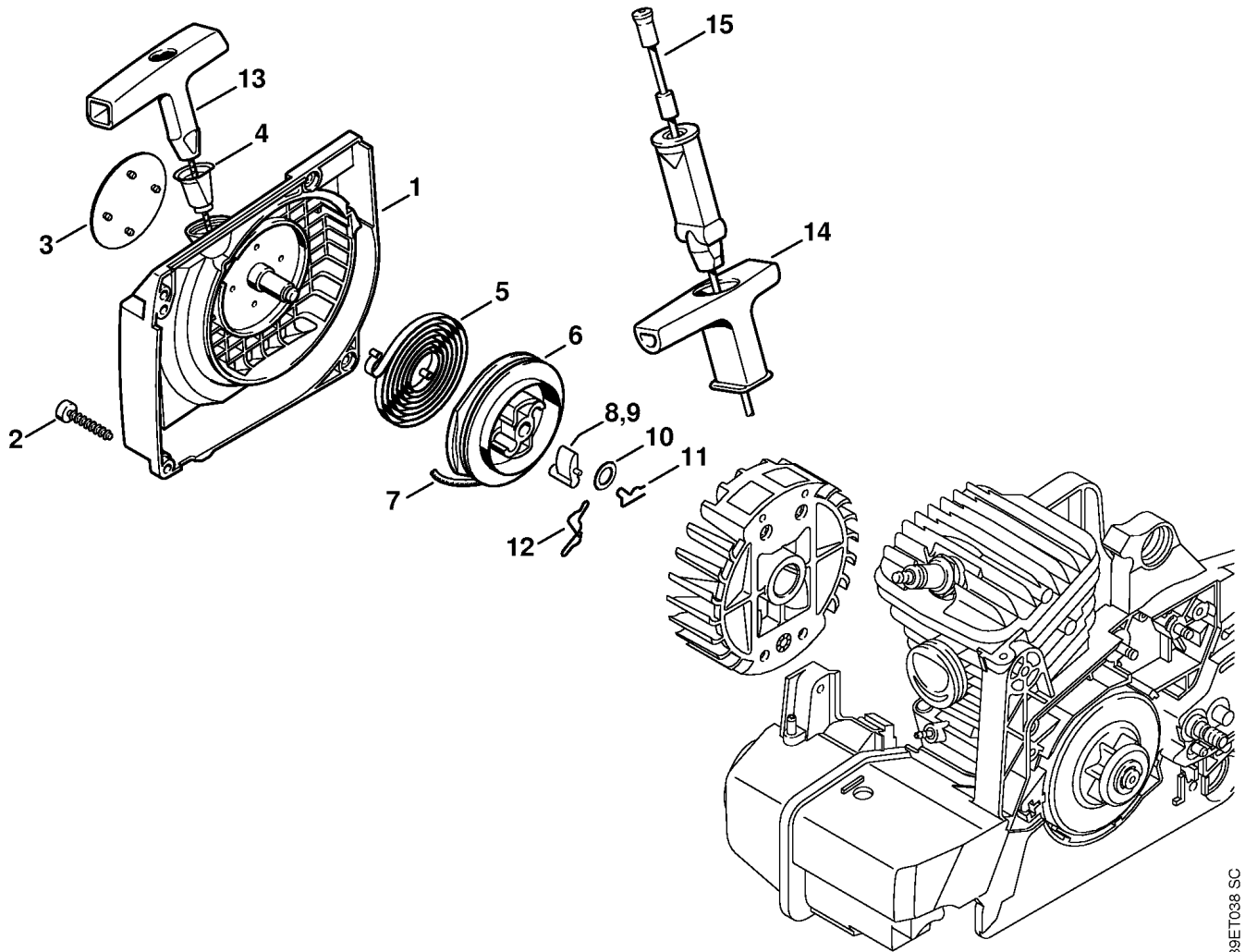




209ET000 SC

Reference	Item number	Qty	Description
1	1127 400 1200	1	Flywheel (25.2005)
2	0000 955 0802	1	Collar nut M8x1
3	0000 400 1300	1	Ignition module □ 4 - 6
4		1	Ignition lead 175 mm (D)
	0000 405 0600	1	Ignition lead 1 m (A,B)
	0000 930 2251	1	Ignition lead 10 m (A,B)
5	0000 989 1010	1	Grommet
6	0000 448 1250	1	Lead retainer
7	9291 021 0120	1	Washer 5.3
8	9075 478 4155	2	Pan head self-tapping screw IS-D5x24
9	1110 400 7005	1	Spark plug Bosch WSR 6 F
9	0000 400 7000	1	Spark plug NGK BPMR7A
10	1128 405 1000	1	Spark plug boot
11	0000 998 0604	1	Torsion spring
12	1127 440 3001	1	Wiring harness □ 13
13	0000 989 0814	1	Grommet
14	1125 084 8900	1	Grommet
15	1123 440 2200	1	Ground wire
16	9075 478 3015	1	Pan head self-tapping screw IS-D4x15
17	1127 141 2200	1	Manifold
18	9771 021 2620	1	Hose clip Ø 36x5
19	1127 141 8600	1	Impulse hose
20	0000 967 3694	1	Warning pictogram Filler cap USA

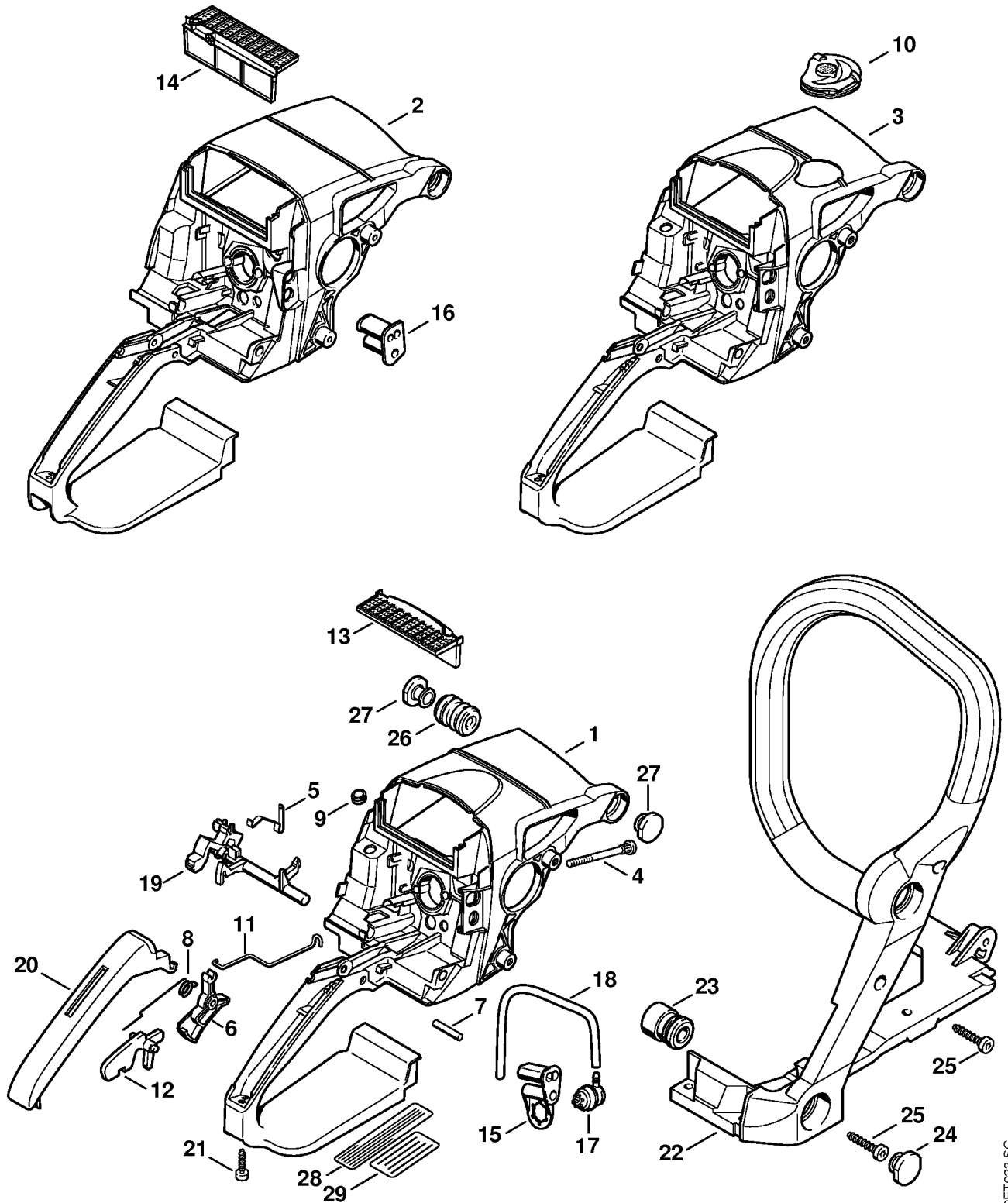
(1) MS 290, (2) MS 310, (3) MS 390



139ET038 SC

Reference	Item number	Qty	Description
	1127 080 2103	1	Fan housing with rewind starter □ 1, 3, 4 - 8, 10, 11, 13
	1127 080 2108	1	Fan housing with rewind starter BR, PRC □ 1, 3, 4 - 7, 9, 10, 12, 13
	1127 080 2110	1	Fan housing with rewind starter (2,3) AUS, NZ □ 1, 3, 4 - 6, 8, 10, 14, 15
1	1127 080 1802	1	Fan housing □ 4
2	9075 478 4155	4	Pan head self-tapping screw IS-D5x24
3	1127 967 1501	1	Model plate MS 290 (1)
3	1127 967 1504	1	Model plate MS 310 (2)
3	1127 967 1502	1	Model plate MS 390 (3)
4	1110 084 9102	1	Bushing
5	1129 190 0601	1	Rewind spring
6	1128 195 0400	1	Rope rotor
7	1113 195 8200	1	Starter rope Ø 3.5x960 mm
	0000 930 2203	1	Starter rope Ø 3.5 mm x 30.5 m (A,B)
8	1125 195 7200	1	Pawl (1,2)
9	1125 195 7200	2	Pawl BR, PRC
10	0000 958 0923	1	Washer
11	1118 195 3500	1	Spring (1,2)
12	1128 195 3500	1	Spring BR, PRC
13	1121 195 3400	1	Starter grip
14	1128 190 3400	1	Starter grip ElastoStart (B) □ 15
15	1128 190 2900	1	Starter rope Ø 3.5 mm (B)
	0000 930 2267	1	Starter rope Ø 3.5 mm / 28 pieces (A,B)

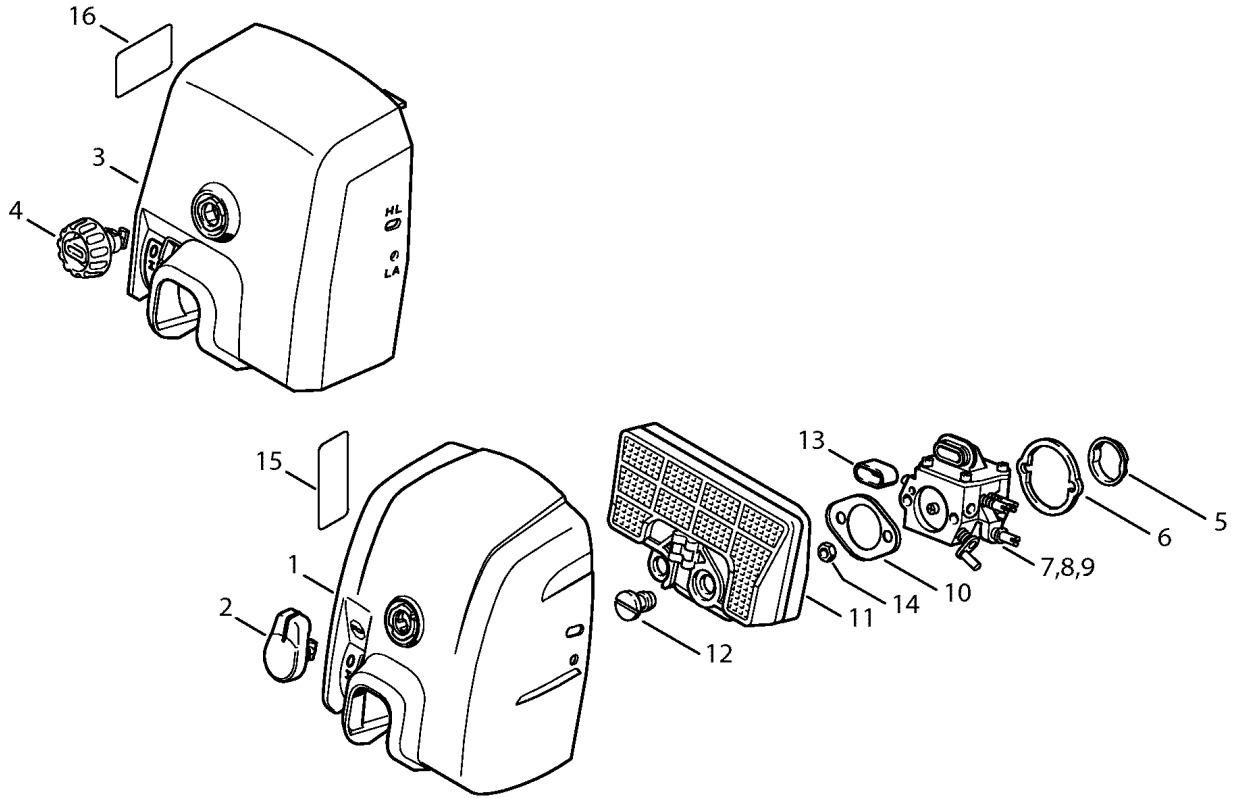
(1) MS 290, (2) MS 310, (3) MS 390



209ET023 SC

Reference	Item number	Qty	Description
1	1127 790 1002	1	Handle housing □ 4 - 9
2 *	1127 790 1001	1	Handle housing → 1 56 601 767 (35.2002) □ 4 - 8
3	1127 790 1008	1	Handle housing (2,3) □ 4 - 10
4	1122 122 6602	2	Collar screw
5	1127 442 1600	1	Contact spring
6	1128 182 1005	1	Throttle trigger
7	9371 470 2640	1	Cylindrical pin 5x24
8	1117 182 4500	1	Torsion spring
9	0000 989 0815	1	Grommet
10	1127 084 7400	1	Grommet (2,3)
11	1127 182 1500	1	Throttle rod
12	1117 182 0805	1	Trigger interlock
13	1127 124 1501	1	Prefilter
14 *	1127 124 1500	1	Prefilter → 1 56 601 767 (35.2002)
15	1127 123 7503	1	Grommet
16 *	1128 123 7502	1	Grommet → 1 56 601 767 (35.2002)
17	0000 350 5802	1	Tank vent
18	1127 358 7600	1	Hose
19	1127 182 0900	1	Switch shaft
20	1123 791 0600	1	Handle molding
21	9075 478 3015	1	Pan head self-tapping screw IS-D4x15
22	1127 790 1700	1	Handlebar □ 23
23	1123 790 9900	2	Annular buffer
24	1123 791 7300	2	Plug
25	9075 478 4155	7	Pan head self-tapping screw IS-D5x24
26	1123 791 2805	1	Annular buffer
27	1123 791 7310	2	Plug
28	0000 967 3500	1	Instruction label USA
29	0000 967 3685	1	Instruction label (3) BR

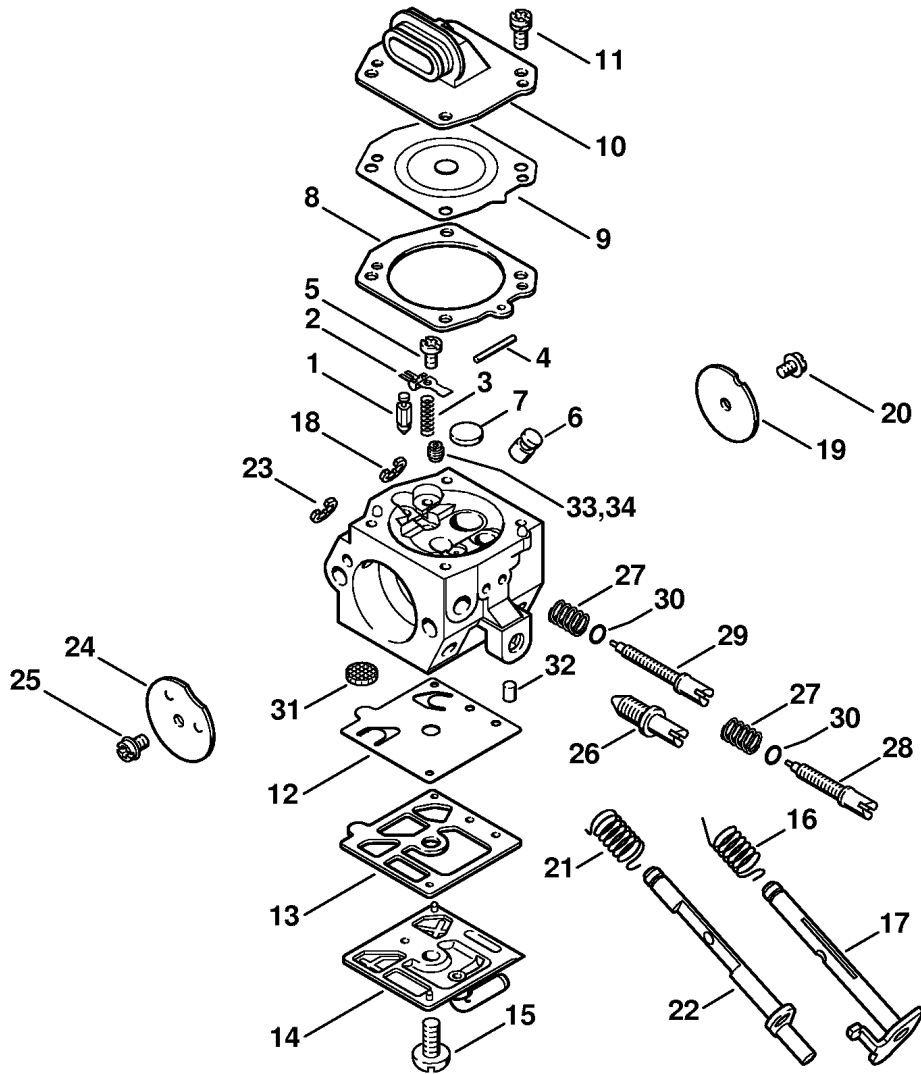
(1) MS 290, (2) MS 310, (3) MS 390



Reference	Item number	Qty	Description
1	1127 140 1903	1	Carburetor box cover □ 2
2	1123 141 2301	1	Twist lock
3	* 1127 140 1900	1	Carburetor box cover → 1 56 601 767 (35.2002) □ 4
4	* 1123 141 2300	1	Twist lock → 1 56 601 767 (35.2002)
5	1117 141 1800	1	Sleeve
6	1128 121 8600	1	Washer
7	1127 120 0650	1	Carburetor HD-19C
7	1127 120 0651	1	Carburetor HD-36A (3) available in Brazil only
8	1127 120 0604	1	Carburetor HD-18C (1)
9	1127 120 0605	1	Carburetor HD-21C (2,3)
10	1127 121 7000	1	Baffle
11	1127 120 1620	1	Air filter □ 12
11	1127 120 1621	1	Air filter, fleece □ 12
12	1124 141 8300	2	Slotted nut
13	1124 121 9100	1	Bushing
14	9210 260 0700	2	Hexagon nut M5
15	0000 967 3605	1	Warning pictogram Filler cap USA
16	* 0000 967 3692	1	Warning pictogram Filler cap

(1) MS 290, (2) MS 310, (3) MS 390

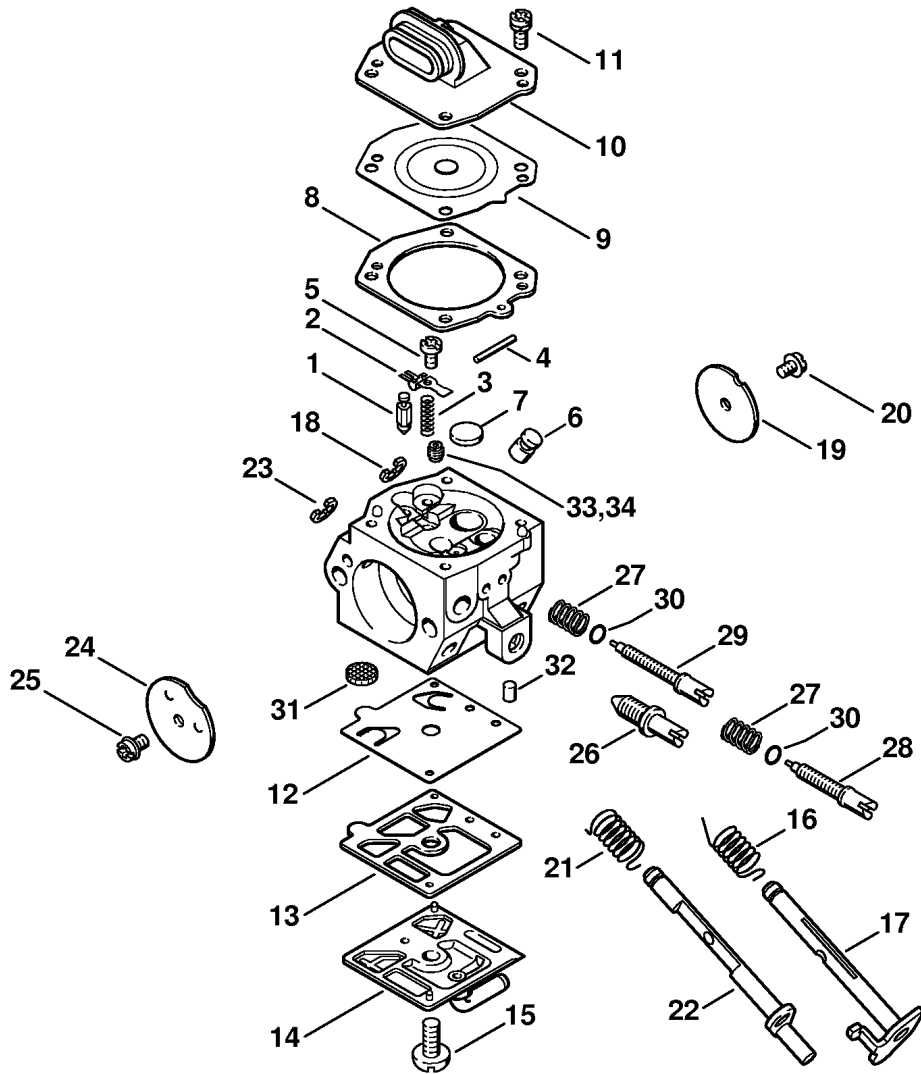




209ET010 SC

Reference	Item number	Qty	Description
	1127 120 0650	1	Carburetor HD-19C □ 1 - 33
	1127 120 0651	1	Carburetor HD-36A (3) available in Brazil only □ 1 - 33
1	4116 121 5100	1	Inlet needle
2	4116 121 5000	1	Inlet control lever
3	4116 122 3002	1	Spring
4	1113 121 9200	1	Spindle
5	1114 122 7400	1	Round head screw
6	1128 121 5403	1	Valve jet
7	4117 122 9402	1	Plug
8	1128 129 0906	1	Gasket
9	4116 121 4700	1	Metering diaphragm
10	1128 121 0801	1	End cover
11	1121 122 7101	4	Screw
12	4116 121 4800	1	Pump diaphragm
13	4116 129 0902	1	Gasket
14	1127 121 0800	1	End cover
15	1114 122 7100	1	Screw
16	1127 122 3200	1	Torsion spring
17	1127 120 7100	1	Throttle shaft with lever
18	1117 122 9000	1	E-clip
19	1127 121 3301	1	Throttle shutter
20	1115 122 7400	1	Round head screw
21	1127 122 3205	1	Torsion spring
22	1127 120 7200	1	Choke shaft with lever
23	1123 122 9000	1	E-clip
24	1122 121 2900	1	Choke shutter
25	1110 122 7400	1	Round head screw
26	1127 122 6201	1	Idle speed adjustment screw
27	1128 122 3003	2	Spring
28	1127 122 6701	1	High speed adjustment screw □ 30
29	1128 122 6803	1	Low speed adjustment screw □ 30
30	4203 122 3600	1	Sealing ring

(1) MS 290, (2) MS 310, (3) MS 390

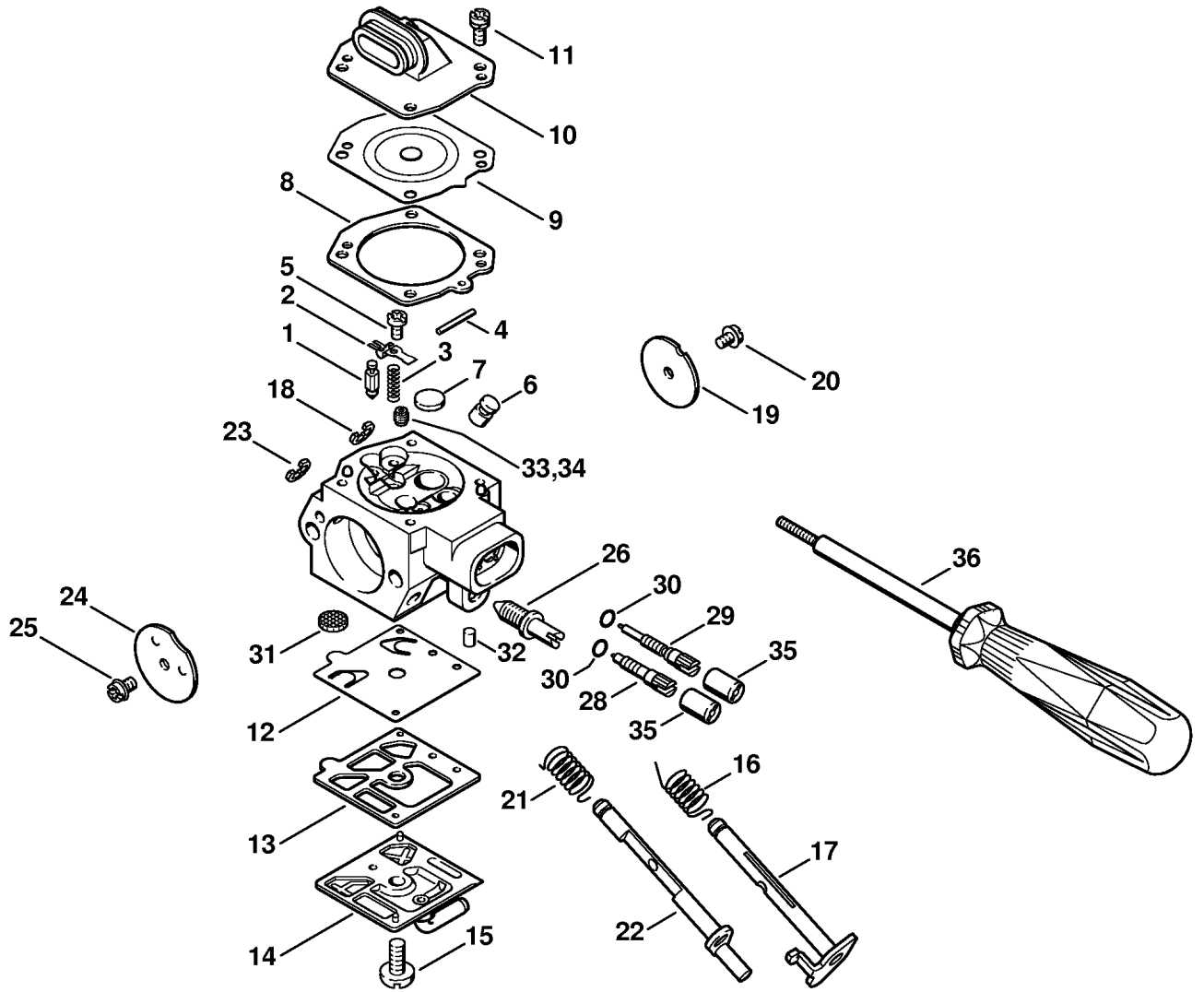


209ET010 SC

---

Reference	Item number	Qty	Description
31	1114 121 7800	1	Strainer
32	1122 121 7700	1	Clamp
33	1122 121 5606	1	Fixed jet 0.65 (3) available in Brazil only
33	1127 121 5602	1	Fixed jet 0.58
34	1130 121 5600	1	Fixed jet 0.54 (B) High altitude
	1127 007 1062	1	Set of carburetor parts <input type="checkbox"/> 1, 3, 8, 9, 12, 13

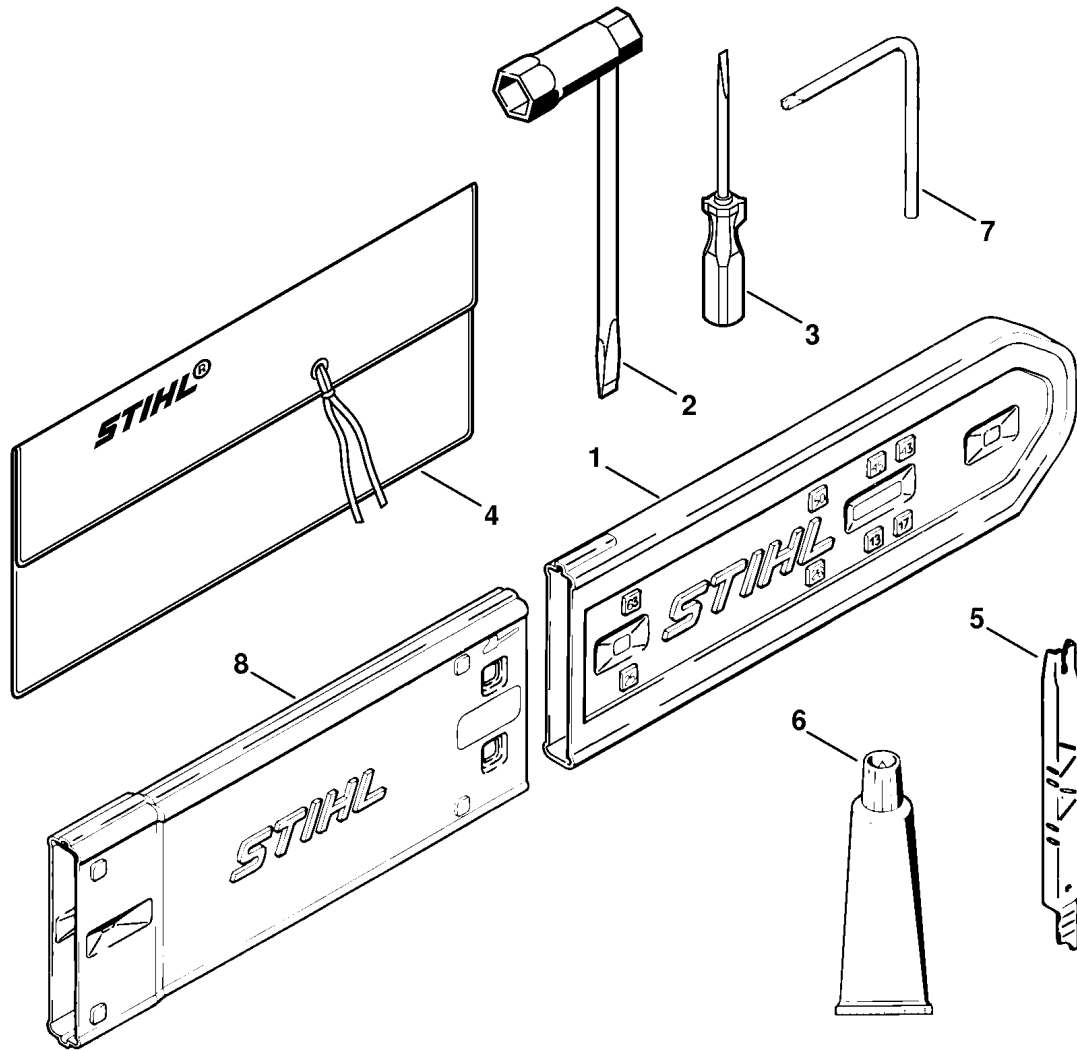
(1) MS 290, (2) MS 310, (3) MS 390



139ET042 SC

Reference	Item number	Qty	Description
	1127 120 0604	1	Carburetor HD-18C (1) □ 1 - 33, 35
	1127 120 0605	1	Carburetor HD-21C (2,3) □ 1 - 33, 35
1	4116 121 5100	1	Inlet needle
2	4116 121 5000	1	Inlet control lever
3	4116 122 3002	1	Spring
4	1113 121 9200	1	Spindle
5	1114 122 7400	1	Round head screw
6	1128 121 5403	1	Valve jet
7	4117 122 9402	1	Plug
8	1128 129 0906	1	Gasket
9	4116 121 4700	1	Metering diaphragm
10	1128 121 0801	1	End cover
11	1121 122 7101	4	Screw
12	4116 121 4800	1	Pump diaphragm
13	4116 129 0902	1	Gasket
14	1127 121 0800	1	End cover
15	1114 122 7100	1	Screw
16	1127 122 3200	1	Torsion spring
17	1127 120 7100	1	Throttle shaft with lever
18	1117 122 9000	1	E-clip
19	1127 121 3301	1	Throttle shutter
20	1115 122 7400	1	Round head screw
21	1127 122 3205	1	Torsion spring
22	1127 120 7200	1	Choke shaft with lever
23	1123 122 9000	1	E-clip
24	1122 121 2900	1	Choke shutter
25	1110 122 7400	1	Round head screw
26	1127 122 6201	1	Idle speed adjustment screw
28	1128 122 6703	1	High speed adjustment screw □ 30
29	1127 122 6800	1	Low speed adjustment screw □ 30
30	4203 122 3600	1	Sealing ring
31	1114 121 7800	1	Strainer
32	1122 121 7700	1	Clamp
33	1120 121 5600	1	Fixed jet 0.56 (1)
33	1127 121 5602	1	Fixed jet 0.58 (2,3)
34	1130 121 5600	1	Fixed jet 0.54 (B) (1,2,3) High altitude
35	4203 121 2700	2	Cap
36	5910 890 4500	1	Puller (B)
	1127 007 1062	1	Set of carburetor parts □ 1, 3, 8, 9, 12, 13

(1) MS 290, (2) MS 310, (3) MS 390



139ET039 GM

---

Reference	Item number	Qty	Description
1	0000 792 9129	1	Chain scabbard
2	1129 890 3401	1	Combination wrench
3	0000 890 2300	1	Screwdriver
3	0000 890 2305	1	Screwdriver available in Brazil only
4	0000 891 0801	1	Tool roll (B)
5	1110 893 4000	1	Filing gauge (B)
6	0783 830 2000	1	Tube of sealant Dirko HT red (B)
7	0812 370 1000	1	Screwdriver T27x120x70 (B)
8	0000 792 9132	1	Chain scabbard extension up to 63 cm (B)
	0751 010 1110	1	Lead 10 m / 33' (A,B)
	0000 930 2251	1	Ignition lead 10 m (A,B)

(1) MS 290, (2) MS 310, (3) MS 390