

F80 & F130 FLEX-SELECT® Series

Adaptable Broadcast Spreader

Assembly and Operating Instructions

PLEASE CONTACT US: IF YOU ARE MISSING ANY PARTS, HAVE ANY DIFFICULTY IN ASSEMBLY, OR HAVE ANY QUESTIONS REGARDING THE SAFE OPERATION OF THIS SPREADER. THIS MODEL INCLUDES LIFETIME TECHNICAL SUPPORT. **SUPPORT HOT LINE: 574-848-7491 or 800-294-0671**

HELPFUL HINTS:

- ☑ If your spreader does not spread evenly, be sure the FRONT on the gear box points to the front of the spreader. The impeller must turn clockwise. Reversing the gearbox will cause the impeller to turn counter clockwise. Clean the impeller after each use as some fertilizer may become stuck on the impeller blades and will cause uneven spreading.
- ☑ Your spreader is designed to be pushed at three miles per hour, which is a brisk walking speed. Slower or faster speeds will change the spread patterns. Wet fertilizer will also change the spread pattern and flow rate.
- ☑ Clean and dry your spreader thoroughly after each use, wash between the shut-off plate and bottom of the hopper regularly. To prevent rust, coat all metal parts (inside and out) including the frame tubes with a light oil, silicon spray, or Fluid Film®.
- ☑ Gears are permanently lubricated at the factory. Do not open the gearbox or dirt may enter.
- ☑ When using **Rock Salt** to prevent damage to the gearbox remove salt from the hopper daily. **Rock Salt** will reconstitute back into a solid block if left in the hopper overnight and will damage your gearbox if pushed with the salt in place.

WARNING

Do not use air tools to assemble.
To prevent seizing coat all bolts
with a wax or grease prior to
installation.

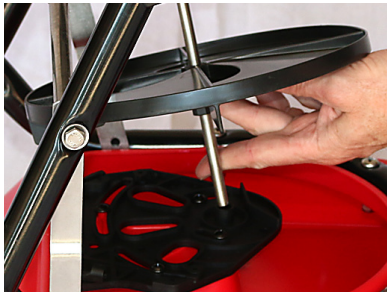
Remove all parts, hardware, and assemblies from carton and lay them out on the floor to help in assembly.

Below are tools needed for assembly - 7/16" wrench, ratchet and 7/16" socket, and pliers.

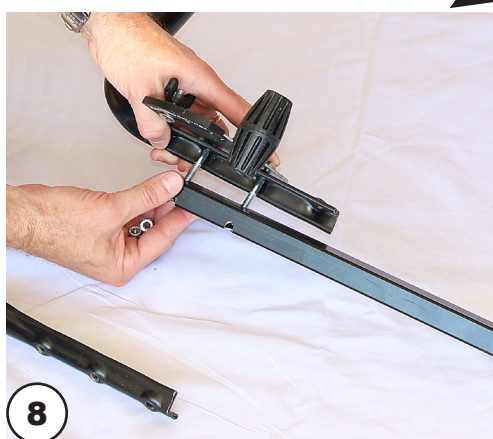
The following photos are for assembly purposes, and please follow them from left to right, top to bottom.



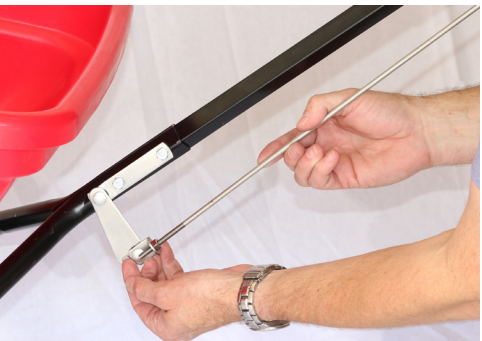
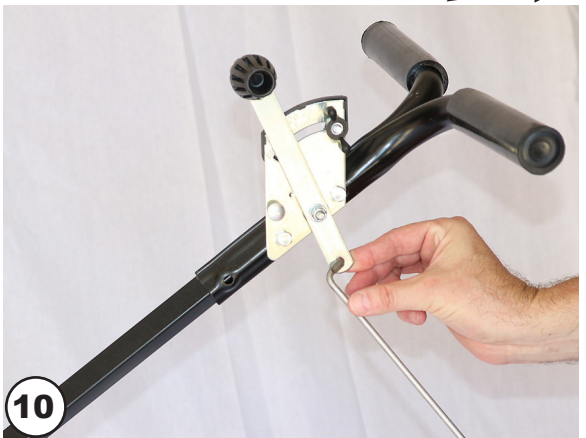
ASSEMBLY



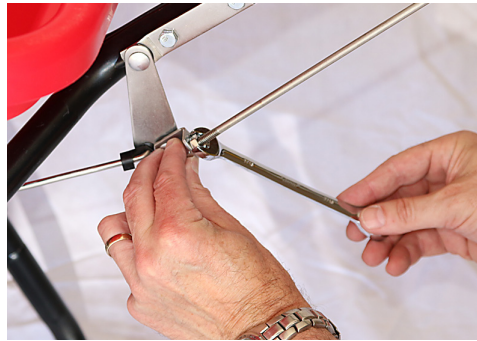
ASSEMBLY - continued



ASSEMBLY - continued



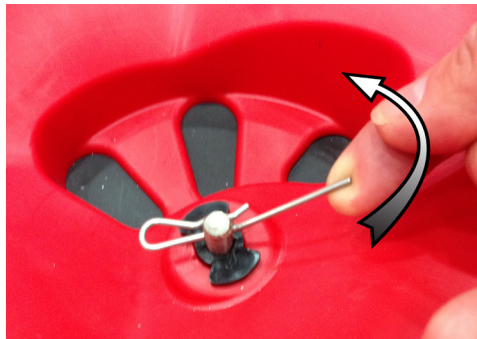
ASSEMBLY - continued



CONFIRM THE CALIBRATION:
Lever at #30 and the drop holes fully open

COMPLETE ASSEMBLY:

Install agitator, bend the agitator up slightly to prevent contact with the standard output tray, and install debris screen (press over 1/4 turn fasteners to secure)



TRAY INSTALLATION



HIGH-OUTPUT AND LOW-OUTPUT:
require the use of the Part #F12117

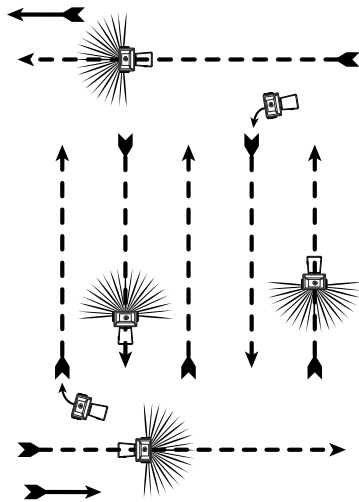


HIGH-OUTPUT AND LOW-OUTPUT:
require the use of the Part #F12117

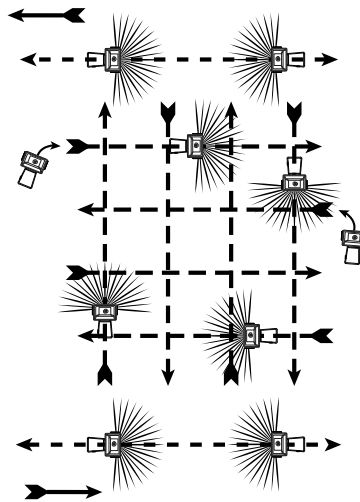


SPREAD PATH

FULL Rate (one pass)



HALF Rate (two passes)



© 2013 Earthway Products, Inc. All rights reserved

5-YEAR LIMITED WARRANTY

The Manufacturer warrants this product free of defects in original workmanship and materials for a period of 5-Years to the end user with the original purchase receipt. If a manufacturing non-conformance is found, Manufacturer at its discretion will repair or replace the part(s) or product at no charge provided the failure is not the result of incorrect installation, mishandling, misuse, tampering, or normal wear and tear as determined by Manufacturer. Manufacturer at its discretion may require that the part(s) or product be returned along with the original purchase receipt at owners' expense for examination and compliance with the terms of this warranty. Do not return any product without first receiving authorization from Manufacturer. To seek remedy under this warranty, contact Manufacturer at 574-848-7491, write to Manufacturer P.O. Box 547 Bristol, Indiana 46507 and describe the nature of the manufacturing defect. **SPECIFIC LIMITATIONS:** This warranty covers only the part(s) or product; any labor charges associated with repair or replacement of non-conformances are specifically excluded. Due to the corrosive nature of most fertilizers and ice melt products, Manufacturer makes no warranty against and specifically excludes part(s) or product degradation or failure due to corrosion or its effects. Clean and dry your spreader thoroughly after each use, as a preventative measure, coat all metal parts with a light oil or silicon spray.

OPERATING INSTRUCTIONS

Before filling hopper, become familiar with the operation of this spreader.

- ✓ Obtain proper setting for material to be used from the enclosed SETTING MATRIX included with this spreader, or from our web site under the MANUALS SECTION.
- ✓ Move stop bolt on rate gauge assembly to the proper setting.
- ✓ While pushing spreader forward, pull control lever back to stop bolt.
- ✓ To stop, push lever forward to close flow holes before you stop moving.
- ✓ When finished, empty any remaining material from hopper.
- ✓ Thoroughly wash spreader and allow to dry before storing. Apply coating of light oil to help prevent corrosion.
- ✓ If you use Rock Salt, **remove agitator** when using Rock Salt to prevent damage to the gearbox.

EPI
1009 Maple Street, PO Box 547
Bristol, IN 46507

For Your Records

Date Purchased

Place of Purchase

HOW TO ORDER SPARE PARTS

All spare parts listed may be ordered direct from
EPI

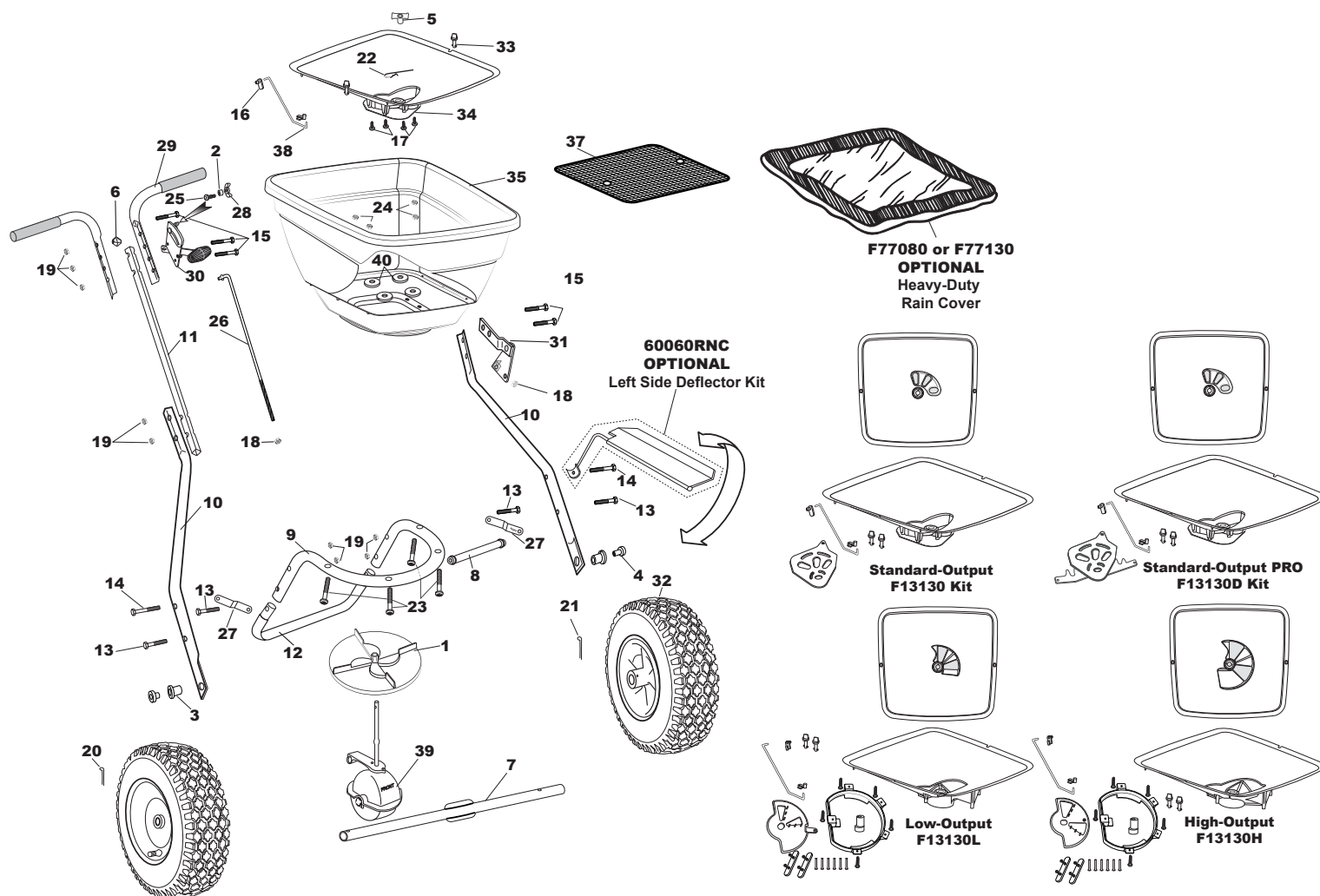
Be sure to give the following information when ordering.

Model Number

Part Number

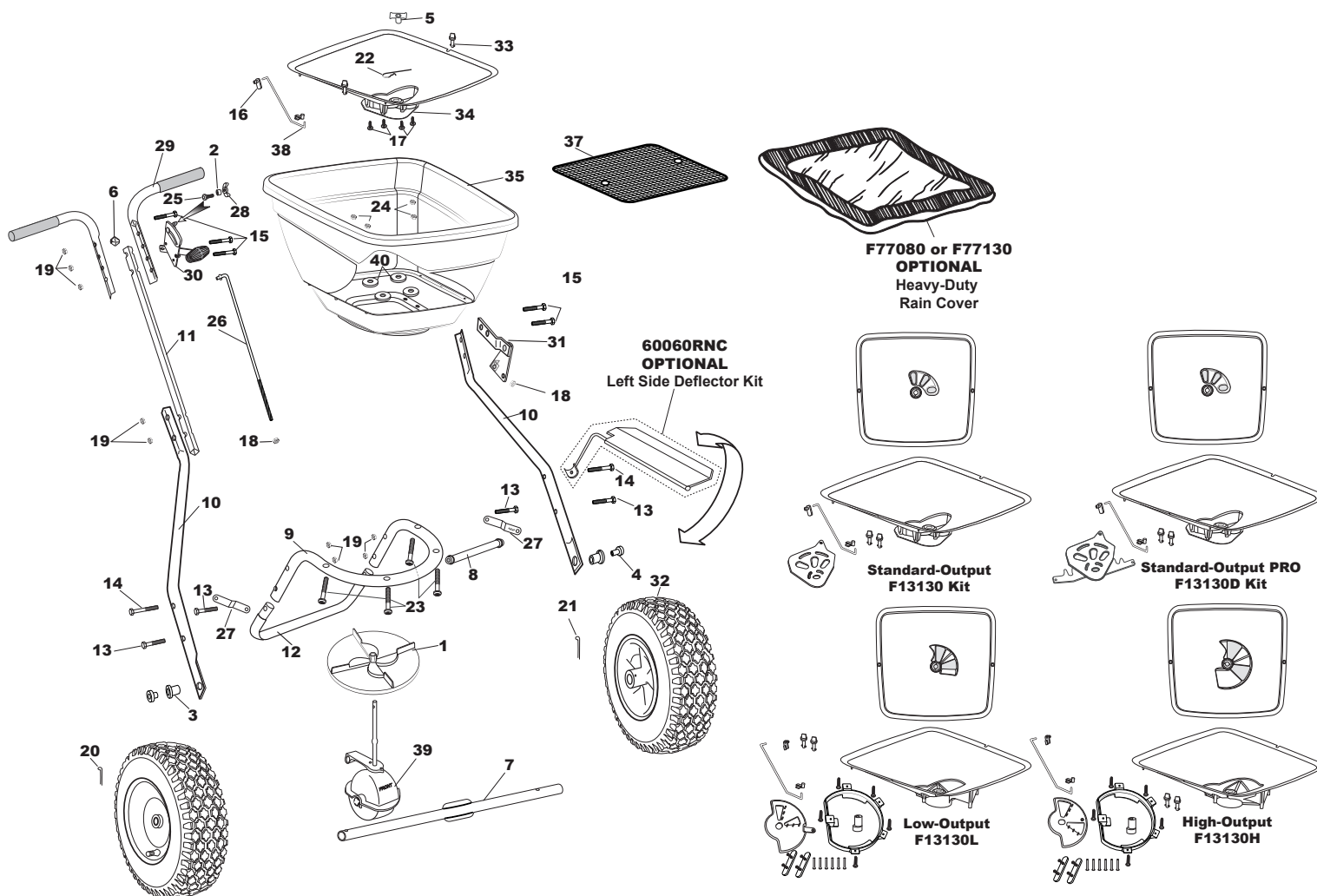
Part Description

Call (574) 848-7491, 800-294-0671 for current prices.



F80 & F130 COMMERCIAL BROADCAST SPREADER

Key #	Part #	Description	Key #	Part #	Description
1	12110	IMPELLER 9" ROUND DISHED	23	36214	1/4-20 X 1 1/2" PHPMS S.S.
2	12147	SPACER (PIVOT LINK)	24	36300	1/4-20 NYLON INSERT LOCKNUT S.S.
3	12148	AXLE BEARING	25	37100	1/4-20 X 1" CARRIAGE BOLT ZINC
4	12152	AXLE BUSHING	26	42256	CONTROL ROD
5	12209	HOPPER BUSHING	27	44249	FRAME BRACE
6	12344	HANDLE SPACER	28	60027	WING NUT ASSEMBLY BLACK
7	24500	AXLE	29	60175	UPPER HANDLE SQUARE W/GRIP ea
8	25228	CROSS BRACE 11.25"	30	60298	GAUGE & LEVER ASSEMBLY
9	25108	FRAME	31	60300	PIVOT & BRACKET ASSEMBLY
10	25222	LOWER HANDLE	32	70138	PNEUMATIC DRIVE WHEEL STUD
11	25223	HANDLE SHAFT	33	F12135	1/4 TURN FASTENER FLEX SELECT
12	25723	FRAME Foot	34	F12219	STANDARD OUTPUT FLEX-SELECT SHUTOFF
13	31100	1/4-20 X 1 1/2 HHMS ZINC	35	F13105 FLEX-SELECT 80# HOPPER / F13106 FLEX-SELECT 130# HOPPER	
14	31106	1/4-20 X 2 1/4" HHCS ZINC	36	F13130	STANDARD OUTPUT FLEX-SELECT TRAY KIT
15	31120	1/4-20 X 2" HHCS ZINC	37	F40003	SQUARE SCREEN FLEX-SELECT
16	31127	ROD CLIP (Flex-Select)	38	F44251	PIVOT ROD STD OUTPUT FLEX-SELECT
17	31138	#8 X 3/8" PMT #8 HD COARSE BLACK	39	F60333	GEAR BOX ASSEMBLY FLEX -SELECT
18	32100	1/4-20 HEX NUT ZINC	40	43020	BACKPLATE WASHER (FOR F130)
19	32103	1/4-20 NYLON INS LOCKNUT ZINC	Optional	60060RNC	SIDE DEFLECTOR
20	33108	3/16" X 1" COTTER PIN ZINC	Optional		HEAVY DUTY RAIN COVER (F77080 for F80 / F77130 FOR F130)
21	33109	3/16" X 2" COTTER PIN ZINC	Optional	12195	GAUGE OVERLAY- LESCO SETTINGS
22	33117	AGITATOR	Standard	12196	GAUGE OVERLAY- EARTHWAY



F80S & F130S COMMERCIAL BROADCAST SPREADER

Key #	Part #	Description	Key #	Part #	Description
1	12110	IMPELLER 9" ROUND DISHED	23	36214	1/4-20 X 1 1/2" PHPMS S.S.
2	12147	SPACER (PIVOT LINK)	24	36300	1/4-20 NYLON INSERT LOCKNUT S.S.
3	12148	AXLE BEARING	25	37100	1/4-20 X 1" CARRIAGE BOLT ZINC
4	12152	AXLE BUSHING	26	42256	CONTROL ROD
5	12209	HOPPER BUSHING	27	44249	FRAME BRACE
6	12344	HANDLE SPACER	28	60027	WING NUT ASSEMBLY BLACK
7	24500	AXLE	29	60175-SS	UPPER HANDLE SQUARE STAINLESS W/GRIP ea
8	25228	CROSS BRACE 11.25"	30	60298	GAUGE & LEVER ASSEMBLY
9	24111	FRAME	31	60300	PIVOT & BRACKET ASSEMBLY
10	25222-SS	LOWER HANDLE	32	70138	PNEUMATIC DRIVE WHEEL STUD
11	25223-SS	HANDLE SHAFT	33	F12135	1/4 TURN FASTENER FLEX SELECT
12	25723-SS	FRAME FOOT SS	34	F12219	STANDARD OUTPUT FLEX-SELECT SHUTOFF
13	36200	1/4-20 X 1 1/2" HHCS S.S.	35	F13105	FLEX-SELECT 80# HOPPER / F13106 FLEX-SELECT 130# HOPPER
14	36205	1/4-20 X 2 1/4" HHCS S.S.	36	F13130	STANDARD OUTPUT FLEX-SELECT TRAY KIT
15	36216	1/4-20 X 2" HHCS S.S.	37	F40003	SQUARE SCREEN FLEX-SELECT
16	31127	ROD CLIP (Flex-Select)	38	F44251	PIVOT ROD STD OUTPUT FLEX-SELECT
17	31138	#8 X 3/8" PMT #8 HD COARSE BLACK	39	F60333	GEAR BOX ASSEMBLY FLEX -SELECT
18	32100	1/4-20 HEX NUT ZINC	40	43020	BACKPLATE WASHER (FOR F130)
19	32103	1/4-20 NYLON INS LOCKNUT ZINC	Optional	60060RNC	SIDE DEFLECTOR
20	36103	3/16 X 2" COTTER PIN S.S.	Optional	HEAVY DUTY RAIN COVER (F77080 for F80 / F77130 FOR F130)	
21	36104	3/16 X 1" COTTER PIN S.S.	Optional	12195	GAUGE OVERLAY- LESCO SETTINGS
22	33117	AGITATOR	Standard	12196	GAUGE OVERLAY- EARTHWAY